

# **Roundtable<sup>®</sup> / Progress Dynamics**

## **Migrating from OpenEdge 10.0B03 to 10.1A**

Copyright © 2006 by Ledbetter & Harp LLC

Roundtable® software products are licensed by Tugboat Software Inc. and copyrighted by Ledbetter & Harp LLC, with all rights reserved. This document is also copyrighted and all rights are reserved. This document may not, in whole or in part, be copied, photocopied, translated, or reduced to any electronic medium or machine-readable form without prior consent, in writing, from Tugboat Software or Ledbetter & Harp LLC.

The information in this document is subject to change without notice, and neither Tugboat Software, nor Ledbetter & Harp LLC assume responsibility for any errors that may appear in this document.

March 2006

Roundtable® is a registered trademark of Ledbetter & Harp LLC.

Microsoft Windows is copyrighted by Microsoft Corporation. Microsoft is a registered trademark of Microsoft Corporation. Windows is a trademark of Microsoft Corporation.

Progress® and OpenEdge ® are registered trademarks of Progress Software Corporation.

UNIX is a registered trademark of The Open Group in the United States and other countries.

All company and product names are the trademarks or registered trademarks of their respective companies.

Tugboat Software  
20301 Birch Street  
Suite 202  
Newport Beach, CA 92660-3112

**Version:** 1.1

**Last Updated:** March 2006

<b>1</b>	<b>INTRODUCTION .....</b>	<b>5</b>
<b>2</b>	<b>ASSUMPTIONS.....</b>	<b>5</b>
<b>3</b>	<b>INSTALLATION PREPARATION .....</b>	<b>5</b>
3.1	PRE-REQUISITES .....	5
3.1.1	<i>Roundtable 10.0A04 or higher.....</i>	<i>5</i>
3.1.2	<i>Roundtable TSMS 10.1A.....</i>	<i>5</i>
3.1.3	<i>Progress OpenEdge 10.0B.....</i>	<i>6</i>
3.1.4	<i>Progress OpenEdge 10.1A.....</i>	<i>6</i>
3.1.5	<i>Dynamics 10.1A.....</i>	<i>6</i>
3.2	SESSION SHORTCUTS AND CONFIGURATION FILES .....	6
3.2.1	<i>Roundtable 10.0A and OpenEdge 10.B03 .....</i>	<i>6</i>
3.2.2	<i>Roundtable 10.x and OpenEdge 10.1A.....</i>	<i>6</i>
3.2.2.1	Example shortcuts .....	6
3.3	PROPATHS .....	8
3.3.1	<i>Roundtable 10.0A and OpenEdge 10.B03 .....</i>	<i>9</i>
3.3.2	<i>Roundtable 10.x and OpenEdge 10.1A.....</i>	<i>10</i>
3.4	DYNAMICS ICFCONFIG.XML FILE .....	10
<b>4</b>	<b>NEW 092DYN-DEP RECEIPT WORKSPACE.....</b>	<b>12</b>
4.1	CREATE AND LOAD NEW ROUNDTABLE PARTNER SITE .....	12
4.1.1	<i>Unpack the Partner Site Deployment package.....</i>	<i>12</i>
4.1.2	<i>Create new receipt workspace .....</i>	<i>13</i>
4.1.3	<i>Load Partner Site Deployment.....</i>	<i>15</i>
4.1.4	<i>Workspace Update Schema .....</i>	<i>16</i>
4.1.5	<i>Populate Workspace.....</i>	<i>18</i>
4.1.6	<i>Create and connect databases.....</i>	<i>19</i>
4.1.6.1	ICFDB.....	19
4.1.6.2	temp-db .....	20
4.1.7	<i>Compile the workspace.....</i>	<i>20</i>
<b>5</b>	<b>MIGRATING WORKSPACES TO 10.1A .....</b>	<b>22</b>
5.1	DISABLE INTEGRATION HOOKS .....	22
5.2	FRAMEWORK WORKSPACE SOURCES.....	24
5.2.1	<i>Dynamics Framework Workspace Sources.....</i>	<i>24</i>
5.2.2	<i>Import from New Source .....</i>	<i>26</i>
5.2.2.1	Include all objects .....	26
5.2.2.2	Exclude Objects with Custom Variants .....	27
5.2.3	<i>Import.....</i>	<i>27</i>
5.3	UPDATING CUSTOM VARIANTS – PART 1.....	27
5.3.1	<i>New OpenEdge custom Products and Modules.....</i>	<i>27</i>
5.3.2	<i>Creating new object variants .....</i>	<i>30</i>
5.4	DCU UPGRADE – PHASE 1 .....	31
5.5	RE-ENABLE INTEGRATION HOOKS.....	33
5.6	ROUNDTABLE UPDATE SCHEMA .....	33
5.7	SELECTIVE COMPILE.....	35
5.8	DCU UPGRADE – PHASE 2 .....	35
5.8.1	<i>Phase 2 manual preparation.....</i>	<i>35</i>
5.8.2	<i>Performing DCU Phase 2 .....</i>	<i>36</i>
5.9	CUSTOM VARIANTS – PART 2 .....	36
5.9.1	<i>SCM Xref .....</i>	<i>36</i>
5.9.2	<i>Review Custom Variants.....</i>	<i>36</i>
5.9.3	<i>Check in Custom Variants .....</i>	<i>36</i>
5.9.4	<i>Clear Old Products and Modules.....</i>	<i>37</i>
5.10	REMOVE OLD FRAMEWORK OBJECTS.....	37

5.11	RELEASE.....	37
<b>6</b>	<b>FOLLOW-ON WORKSPACES.....</b>	<b>37</b>
6.1	DISABLE INTEGRATION HOOKS .....	37
6.2	START A ROUNDTABLE SESSION FROM YOUR 10.1A SHORTCUT .....	37
6.3	UPDATE WORKSPACE SOURCES .....	37
6.4	WORKSPACE IMPORT.....	38
6.4.1	<i>Include all objects .....</i>	<i>38</i>
6.5	DCU UPGRADE – PHASE 1 .....	38
6.6	RE-ENABLE INTEGRATION HOOKS.....	40
6.7	ROUNDTABLE UPDATE SCHEMA .....	40
6.8	SELECTIVE COMPILE.....	41
6.9	DCU UPGRADE – PHASE 2 .....	42
6.10	CUSTOM VARIANTS FROM SOURCE.....	42
6.10.1	<i>SCM Product Module Xref.....</i>	<i>42</i>
6.10.2	<i>Clear Old Product Modules .....</i>	<i>42</i>
6.11	RELEASE.....	42
<b>7</b>	<b>TECHNICAL SUPPORT.....</b>	<b>43</b>
7.1	DYNAMICS SUPPORT .....	43
7.2	ROUNDTABLE DYNAMICS SUPPORT .....	43

# 1 Introduction

This document describes the process of upgrading a Roundtable installation with Roundtable and Dynamics to Progress Dynamics 10.1A.

The processes described in this document refer to an upgrade from an environment with OpenEdge 10.0B03 to Dynamics 10.1A.

Performing a new installation is not described in this document.

## 2 Assumptions

- A mixture of Dynamics 10.0B03 and Dynamics 10.1x workspaces can co-exist in the same Roundtable repository.
- The only migration path to be attempted with the instructions in this document is from 10.0B03 to 10.1A. Workspaces are upgraded to 10.0B03 before being migrated to 10.1A.
- Users have to be responsible for only selecting workspaces that are compatible with the session that they are running.
- In an OpenEdge 10.0B session, only Dynamics 10.0Bx workspaces should be selected.
- In an OpenEdge 10.1A session, only Dynamics 10.1x workspaces should be selected.
- Migration from 10.0B releases other than 10.0B03 (e.g. 10.0B02 or 10.0B04) to 10.1A are not supported.
- Migration from 10.0B03 to 10.1A with any service packs added (e.g. 10.1A01) are not supported.

Note:

There is no functionality built into Roundtable to only allow the selection of workspaces that are dependent on a certain Progress and Dynamics version.

## 3 Installation preparation

### 3.1 Pre-requisites

The following product installations are a pre-requisite for the installation and use of the Roundtable Dynamics integration with Dynamics 10.1A:

#### 3.1.1 Roundtable 10.0A04 or higher

The Roundtable Dynamics integration supported by Tugboat Software requires that Roundtable 10.0A and patch 10.0A04 or higher have been installed.

Roundtable 9.1C has not been tested with this release of Dynamics, and it is not supported by Roundtable.

The steps for upgrading a Roundtable installation and Roundtable repository to 10.0B03 are not included in the upgrade document. Please refer to the following document available from the Roundtable website.

#### 3.1.2 Roundtable TSMS 10.1A

Roundtable 10.1A can also be used instead of Roundtable 10.0A04 or higher.

This installation should also have the latest Roundtable Dynamics Add-on package for OpenEdge. The latest patch and add-on package with instructions for installation can be downloaded from the Roundtable support website.

Roundtable 10.1A must be compiled with OpenEdge 10.1A.

### **3.1.3 Progress OpenEdge 10.0B**

The Roundtable partner site deployment package described in this document requires that Progress OpenEdge 10.0B and Service Pack 10.0B03 is installed and used during and after the upgrade.

### **3.1.4 Progress OpenEdge 10.1A**

The Roundtable partner site deployment package described in this document also requires that Progress OpenEdge 10.1A is installed and used during and after the upgrade.

### **3.1.5 Dynamics 10.1A**

The Roundtable Partner Site deployment package described in this document contains a copy of the commercial Progress OpenEdge 10.1A code. This code is limited to the code needed to make a workspace complete enough for application development with Dynamics as a part of the application.

There are some other files included in the commercial CD installation of OpenEdge 10.1A from Progress Software. It is therefore important that this has been installed separately prior to performing this upgrade.

## **3.2 Session shortcuts and configuration files**

Two sets of shortcuts and configuration files for accessing the Roundtable environment are needed.

The first set should already be in place for the existing Progress Dynamics 10.0B03 environments.

The second set of shortcuts and configuration files are needed during the migration and will be used once the migration processes have been completed.

### **3.2.1 Roundtable 10.0A and OpenEdge 10.B03**

The shortcuts and configuration files using Progress 10.0B03 and Roundtable 10.0A should already be in place.

These should include:

- .ini, .pf and icfconfig.xml files
- A shortcut to start the main Roundtable environment
- Shortcuts for Progress Dynamics development and runtime sessions outside of Roundtable – using the environments contained within Roundtable workspaces.

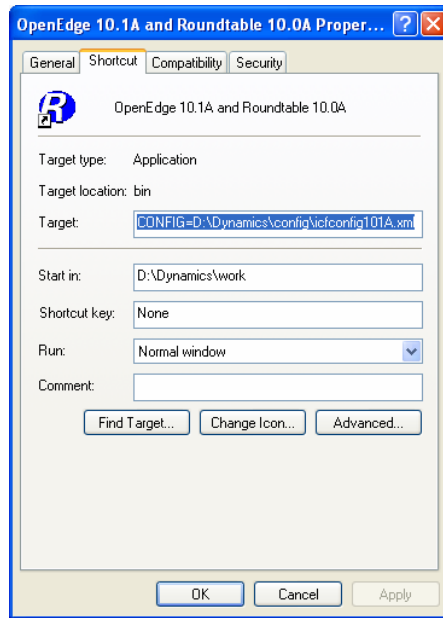
### **3.2.2 Roundtable 10.x and OpenEdge 10.1A**

A new set of shortcuts and configuration files have to be setup up for the new OpenEdge environment. The same configuration files and shortcuts as the ones that exist already for OpenEdge 10.0B03 are needed for the OpenEdge configurations.

Make sure that the shortcuts have been configured so that a Roundtable 10.x session can be started against the existing Roundtable repository.

#### **3.2.2.1 Example shortcuts**

OpenEdge 10.1A and Roundtable 10.0A



Command line:

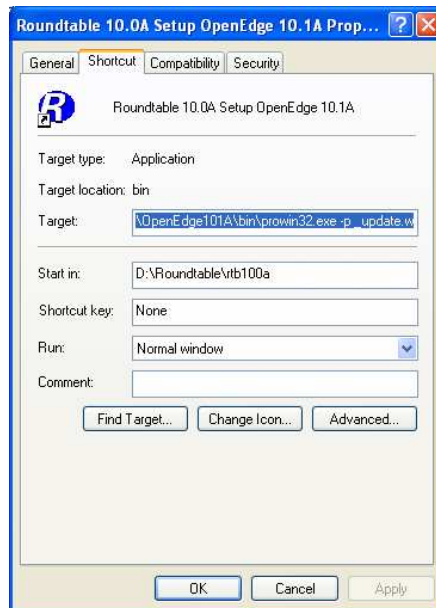
```
D:\OpenEdge101A\bin\prowin32.exe  
-p _rtb.r  
-pf D:\Dynamics\pf\loc_rtb_dynamics101A.pf  
-ininame D:\Dynamics\ini\loc101A_rtb100a_dyn101A.ini  
-icfparam ICFCONFIG=D:\Dynamics\config\icfconfig101A.xml
```

Note: Each argument of the command line has been written on a separate line for readability.

Start in:

```
D:\Dynamics\work
```

Roundtable 10.0A Setup OpenEdge 10.1A



Command line:

```
D:\OpenEdge101A\bin\prowin32.exe -p _update.w
```

Start in:

```
D:\Roundtable\rtb100a
```

### 3.3 PROPATHs

The basic PROPATHs for the Roundtable sessions are stored in the .ini files referenced in the startup command line for the Roundtable shortcuts. This base PROPATH will be modified when each workspace is selected during the Roundtable session.



### 3.3.1 Roundtable 10.0A and OpenEdge 10.B03

The PROPATH for a typical Roundtable 10.0A and OpenEdge 10.0B03 environment is shown below:

```
...
PROPATH=
.,
D:\Roundtable\rtb100a,
D:\OpenEdge100B\gui\adecomm.pl,
D:\OpenEdge100B\gui\adeicon.pl,
D:\OpenEdge100B\gui\adeshar.pl,
D:\OpenEdge100B\gui\adeuib.pl,
D:\OpenEdge100B\gui\protools.pl,
D:\OpenEdge100B\gui\adeedit.pl,
D:\OpenEdge100B\gui\adedict.pl,
D:\OpenEdge100B\gui\product.pl,
D:\OpenEdge100B\gui\adecomp.pl,
D:\OpenEdge100B\gui\adedesk.pl,
D:\OpenEdge100B\gui\adexml.pl,
D:\OpenEdge100B\gui\adeweb.pl,
D:\OpenEdge100B\gui\aderes.pl,
D:\OpenEdge100B\gui\adetran.pl,
D:\OpenEdge100B\gui\as4dict.pl,
D:\OpenEdge100B,
D:\OpenEdge100B\gui,
D:\OpenEdge100B\src,
D:\OpenEdge100B\src\wrappers,
D:\OpenEdge100B\gui,
D:\OpenEdge100B\src,
D:\OpenEdge100B\bin,
D:\OpenEdge100B\PROBUILD\EUCAPP\EUC.PL,
D:\OpenEdge100B\PROBUILD\EUCAPP
...
```

Note: Each line in the PROPATH has been written on a separate line for readability.

### 3.3.2 Roundtable 10.x and OpenEdge 10.1A

The PROPATH for a typical Roundtable 10.0A and OpenEdge 10.1A session is shown below:

```
...
PROPATH=
..
D:\Roundtable\rtb100a,
D:\OpenEdge101A\gui\adecomm.pl,
D:\OpenEdge101A\gui\adeicon.pl,
D:\OpenEdge101A\gui\adeshar.pl,
D:\OpenEdge101A\gui\adeuib.pl,
D:\OpenEdge101A\gui\protools.pl,
D:\OpenEdge101A\gui\adeedit.pl,
D:\OpenEdge101A\gui\adedict.pl,
D:\OpenEdge101A\gui\product.pl,
D:\OpenEdge101A\gui\adecomp.pl,
D:\OpenEdge101A\gui\adedesk.pl,
D:\OpenEdge101A\gui\adexml.pl,
D:\OpenEdge101A\gui\adeweb.pl,
D:\OpenEdge101A\gui\aderes.pl,
D:\OpenEdge101A\gui\adetran.pl,
D:\OpenEdge101A\gui\as4dict.pl,
D:\OpenEdge101A,
D:\OpenEdge101A\gui,
D:\OpenEdge101A\src,
D:\OpenEdge101A\bin,
D:\OpenEdge101A\PROBUILD\EUCAPP\EUC.PL,
D:\OpenEdge101A\PROBUILD\EUCAPP
...
```

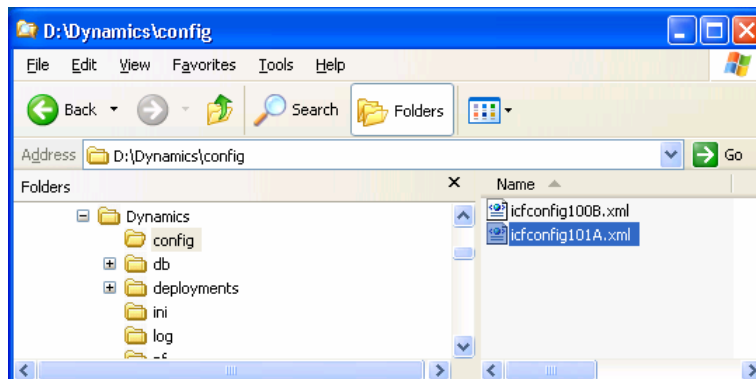
Note: Each line in the PROPATH has been written on a separate line for readability.

## 3.4 Dynamics icfconfig.xml file

A copy of an OpenEdge 10.1A icfconfig.xml file with the necessary Dynamics Session Types has to be created.

1. Take a copy of the standard <OpenEdge Install directory>\src\dynamics\icfconfig.xml file and place this together with the existing icfconfig.xml files being used for the Roundtable environment.

The screen shot below shows an example of a file located in a **D:\Dynamics\config** directory called **icfconfig101A.xml**.

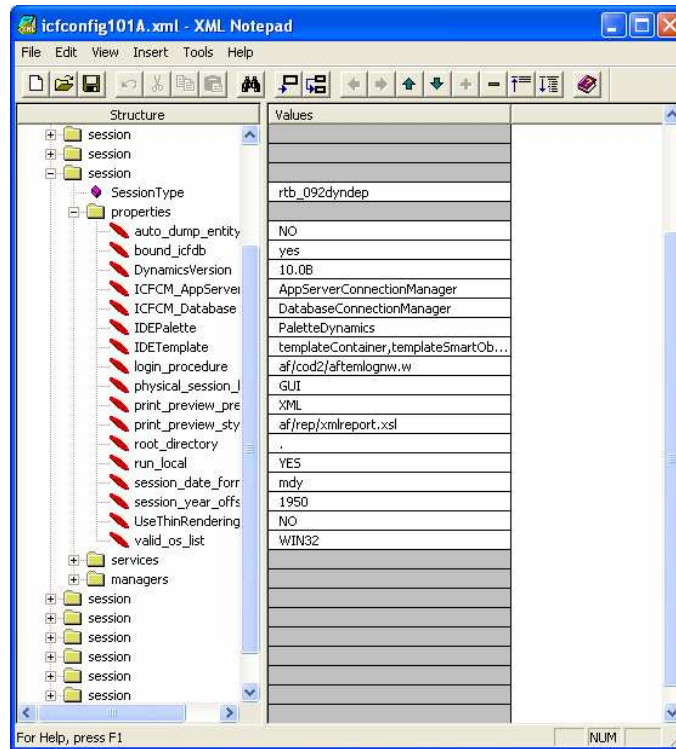


2. Make sure that this file has a correctly configured session type for the session **rtb\_092dyndep**. This session type is needed for the 092dyn-dep receipt workspace which will be created in the next section.

**NOTE:**

There are no 092 session types defined in the icfconfig.xml file from the OpenEdge 10.01A installation. It is therefore necessary to manually create a session type:

3. Modify the **rtb\_091dyndep** Session Type and rename it to **rtb\_092dyndep**.



- Change all references to 091 in the properties and services to 092
- Change the DynamicsVersion to 10.1A

## 4 New 092dyn-dep Receipt Workspace

The Roundtable Partner Site Deployment packages provided for OpenEdge 10.1A consist of 1 package:

- A full partner site deployment package for creating a new partner site receipt workspace for OpenEdge 10.1A and Roundtable. This deployment is provided as a .zip file with the name: **rtb\_101000.zip**

NOTE: The .zip file with the partner site deployment only contains the contents of the deployment's `rtb_*` directories. They do not contain the Dynamics source code files that were generated from the deployment. This is intentional to reduce the download size of the .zip file. The contents of the partner receipt workspace can be extracted from the updated RTB repository using the Populate Workspace functionality in Roundtable.

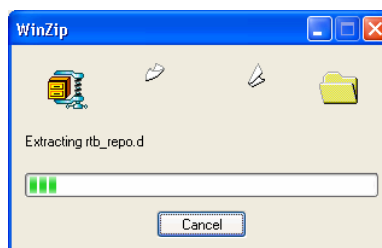
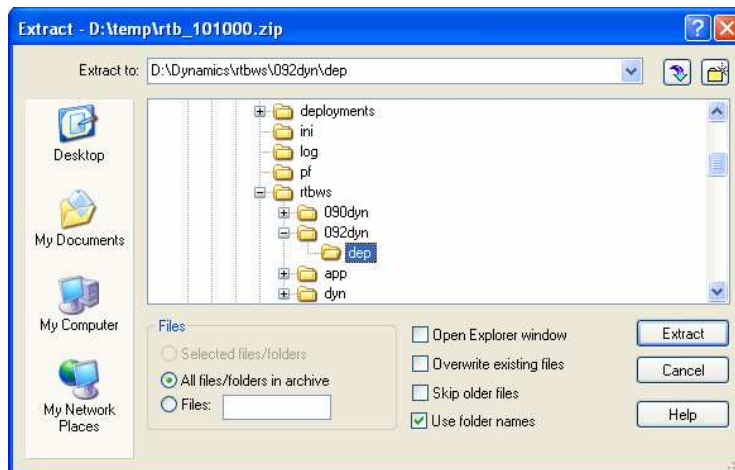
### 4.1 Create and load new Roundtable Partner Site

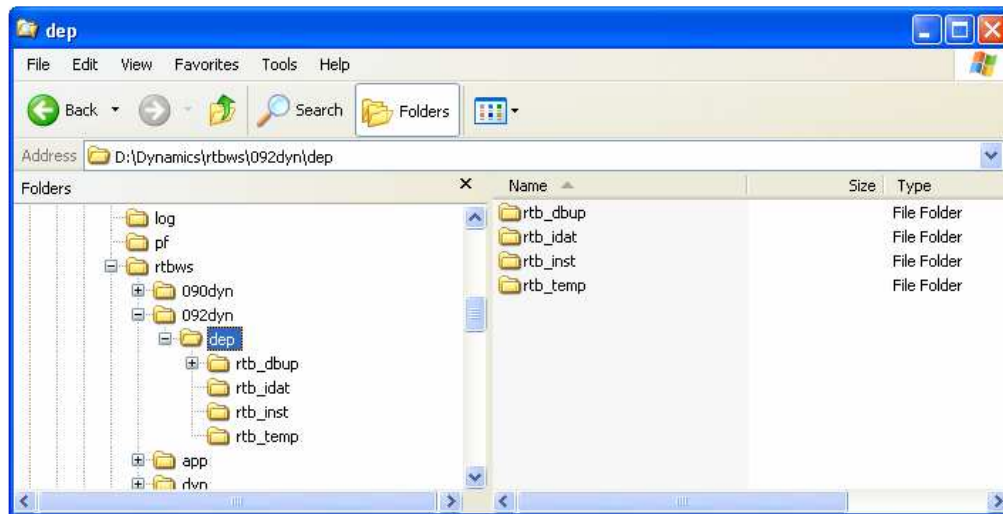
Before the contents of the deployment package can be loaded into Roundtable, a new partner site receipt workspace must be created.

This section describes the steps required to create a new 092dyn-dep receipt workspace.

#### 4.1.1 Unpack the Partner Site Deployment package

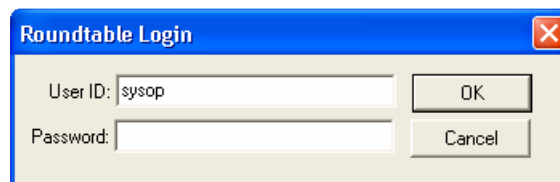
1. Create a new directory structure to contain the receipt workspace and unzip the latest full Partner Site deployment package for OpenEdge 10.1A.
2. Unzip and load the Dynamics 10.1A Roundtable package – **rtb\_101000.zip**



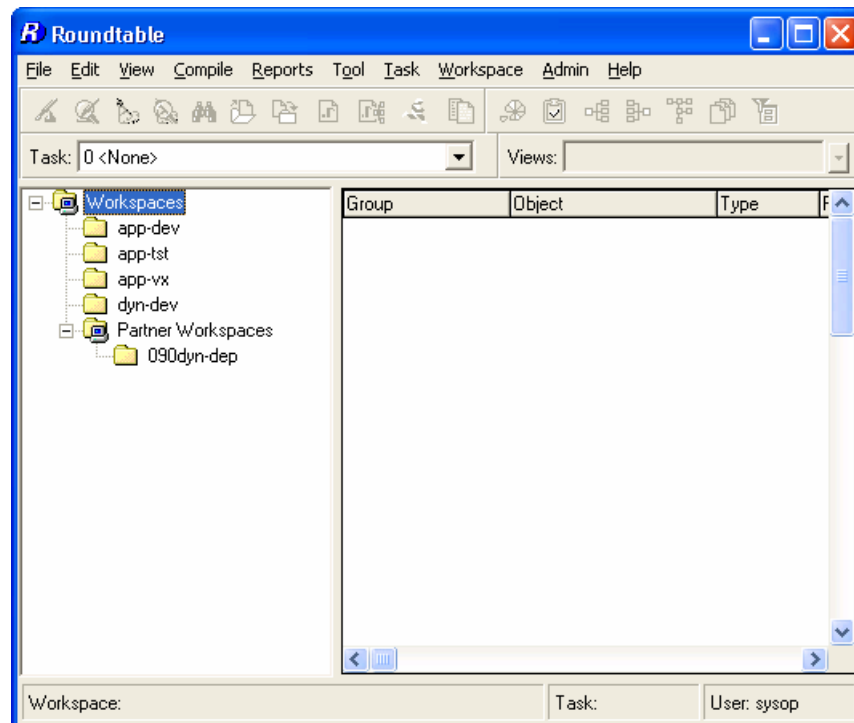


#### 4.1.2 Create new receipt workspace

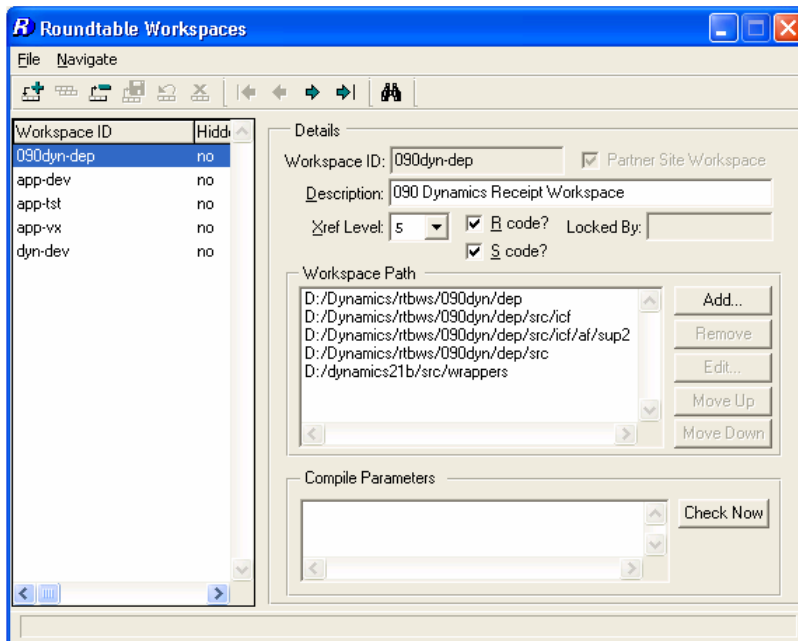
1. Start a Roundtable 10.0A and OpenEdge 10.1A session against the Roundtable repository and login as **sysop**.



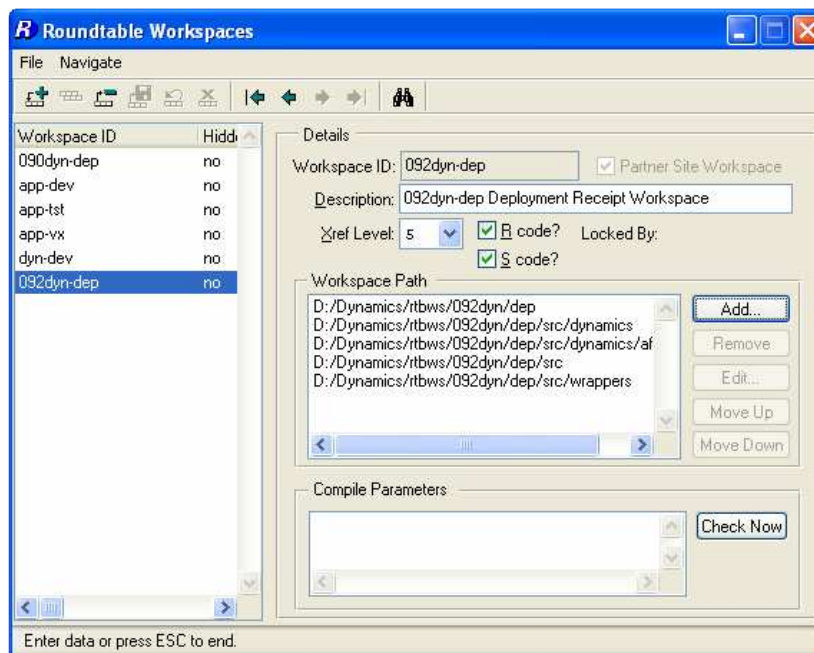
2. Do not select a workspace at this time.



### 3. Start **Workspace Maintenance**



### 4. Add a new workspace like the one shown in the screen shot below



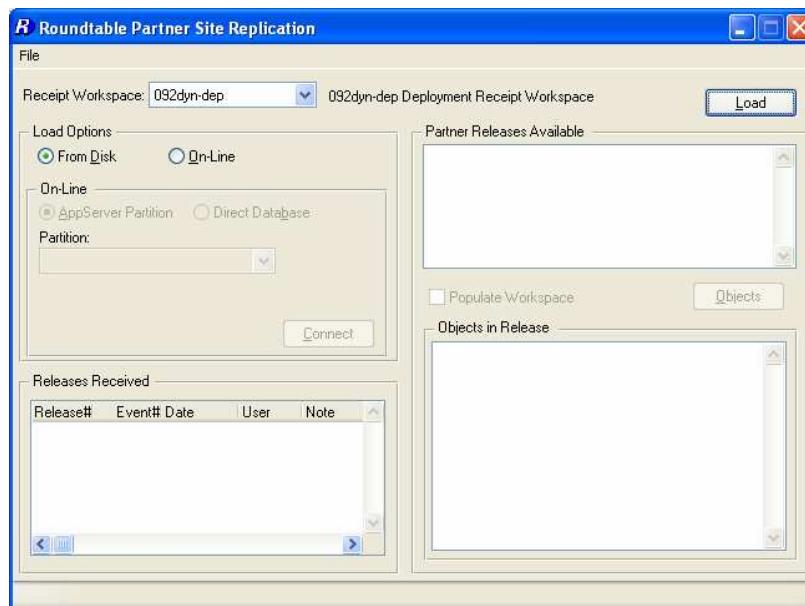
It is important that the name of the workspace is **exactly 092dyn-dep** and that the **Partner Site Workspace** toggle is **on**.

The workspace path should look like this:

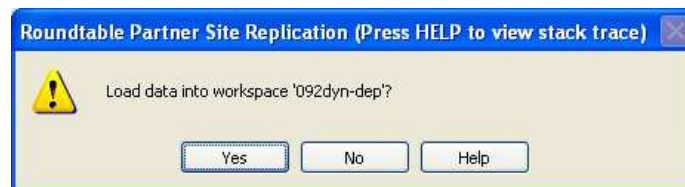
```
<workspace-root-path>/092dyn/dep  
<workspace-root-path>/092dyn/dep/src/dynamics  
<workspace-root-path>/092dyn/dep/src/dynamics/af/sup2  
<workspace-root-path>/092dyn/dep/src  
<workspace-root-path>/092dyn/dep/src/wrappers
```

### 4.1.3 Load Partner Site Deployment

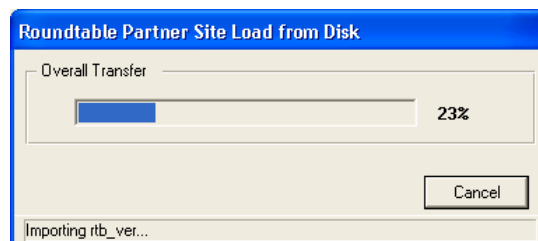
1. If the Roundtable repository site number is 000, select **Help → About Roundtable** and temporarily change the site number to 101  
(*This is necessary to ensure that new Code Subtypes are loaded correctly into the repository*).
2. Close the workspace maintenance and select **Tool → Partner Site Replication**.
3. Select the **092dyn-dep** workspace.



4. Select **From Disk** and Press **Load...**
5. Answer **yes** to the following prompt.

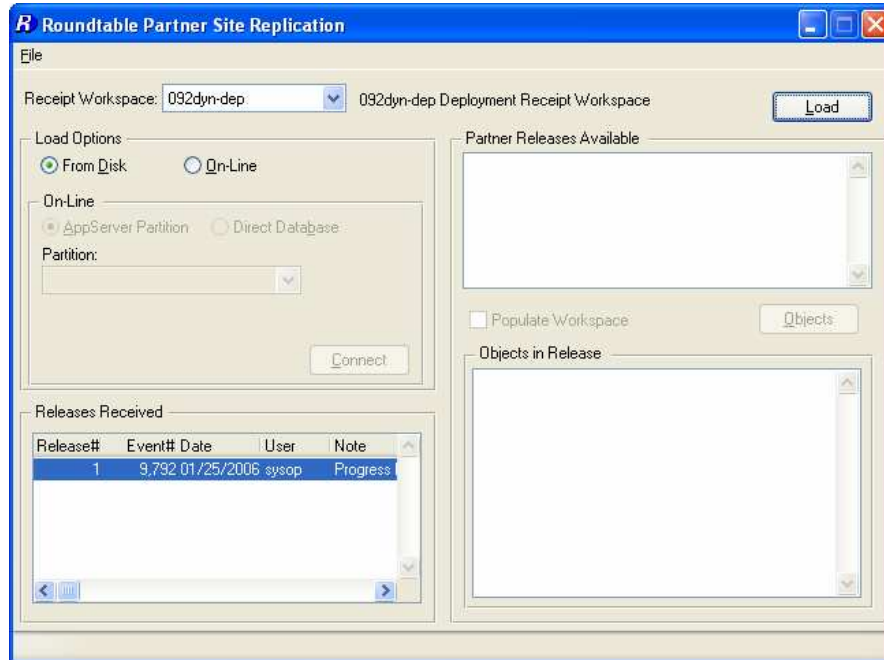


6. This will start the partner site load:



This load will take several minutes.

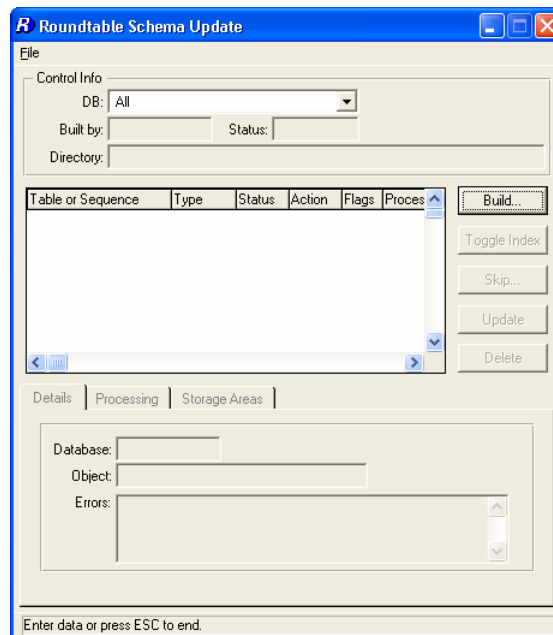
- When the load has completed successfully, the release for the loaded **Partner Site Deployment** will be visible in the **Partner Site Replication** screen.



If the Roundtable repository site was changed at the start of this section, set it back. Select **Help → About Roundtable** and **change the site number to 000**.

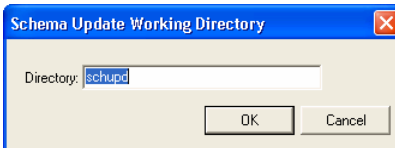
#### 4.1.4 Workspace Update Schema

- Select the workspace and select **Workspace → Update Schema**.

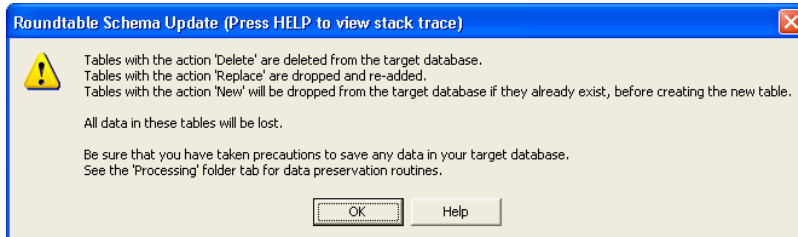


- Press **Build**.

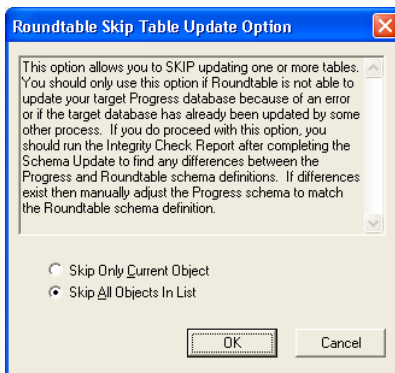




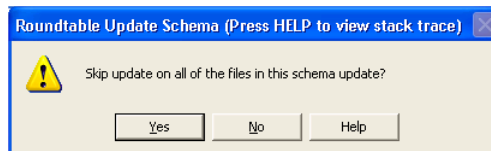
3. Press **OK** at the warning prompt.



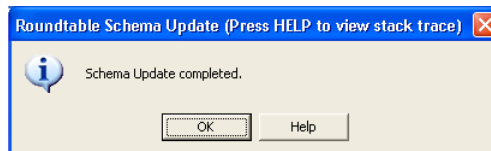
4. Press **Skip**, and select the **Skip All** option. Press **OK**.



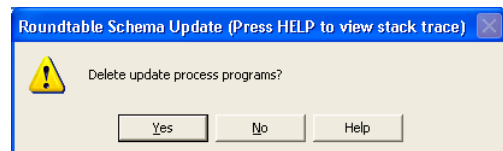
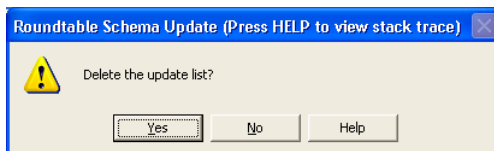
5. Answer **yes** to the following question:



6. Press **Update** and answer **yes** to the prompt.



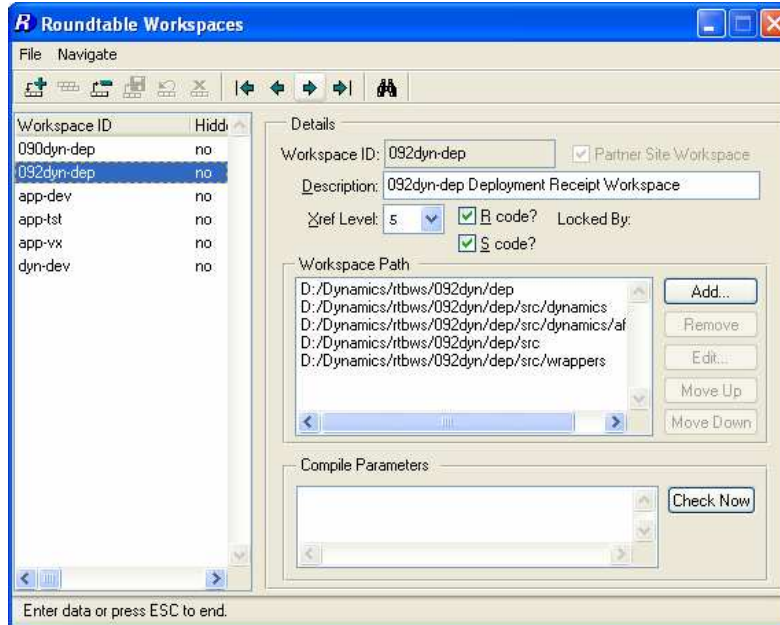
7. Press **Delete** and answer **yes** to the next two prompts.



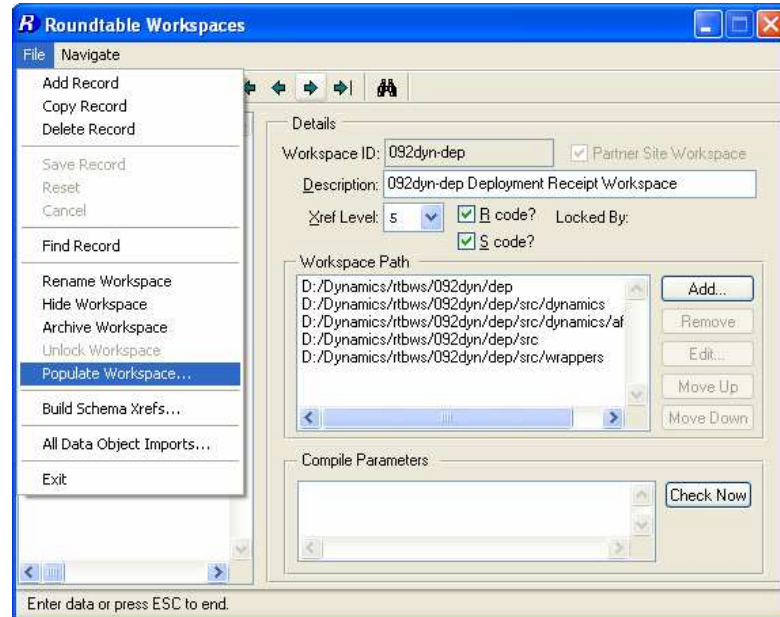
### 4.1.5 Populate Workspace

As the source code for the Partner Site workspace is not included in the deployment package, it is not necessary to extract the physical contents of the workspace from the Roundtable repository to disk.

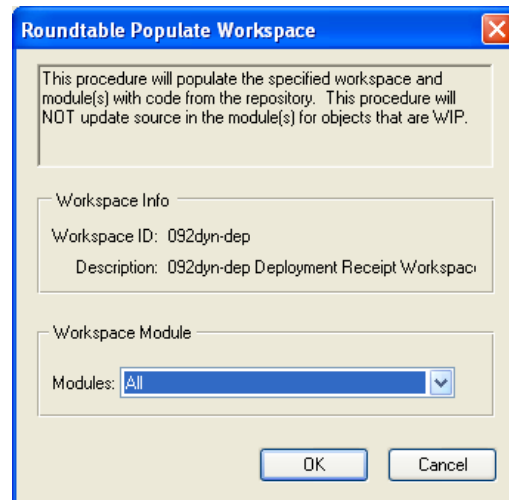
1. Restart **Workspace Maintenance** and select the **092dyn-dep** workspace.



2. Select **File → Populate Workspace**



3. Select **All** modules and press **OK**.

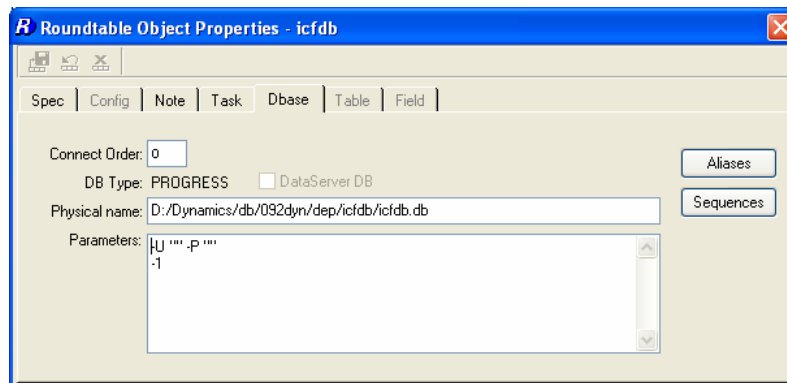


4. Once the workspace has been populated, databases have to be created and configured for the new workspace. These databases then need to be connected within the workspace so that the workspace contents can be compiled against these databases.

## 4.1.6 Create and connect databases

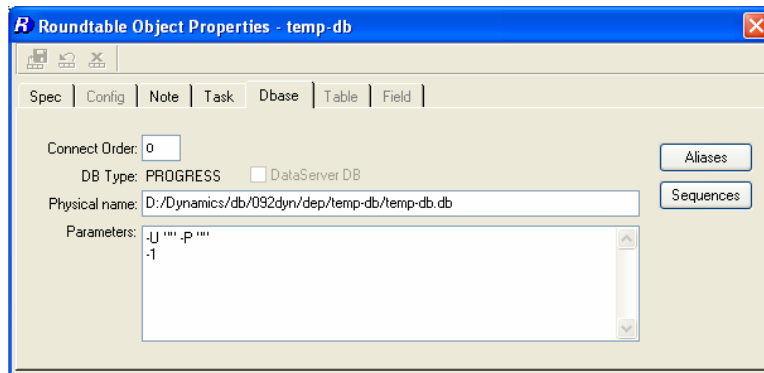
### 4.1.6.1 ICFDB

1. Run the OpenEdge 10.1A version of the **DCU** to create a new **ICFDB** database in the 092dyn-dep workspace.
2. Set the database connections in the workspace



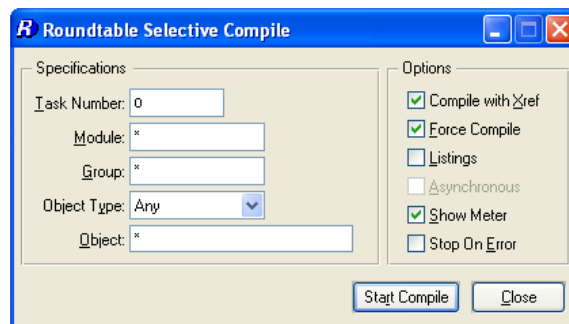
#### 4.1.6.2 temp-db

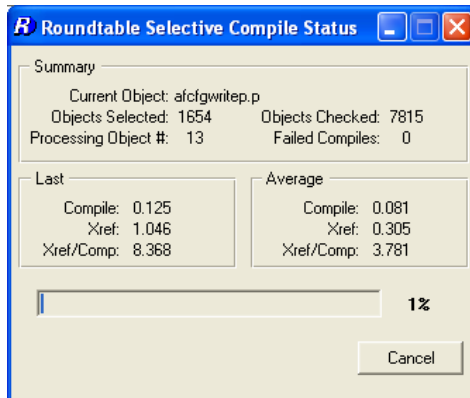
1. Use Data Administration to create a new **temp-db** database from src/adettdb/temp-db.df.
2. Create a new empty temp-db database
3. Load the following database definitions and data:
  - A. Load <workspace-root-path>/src/adettdb/temp-db.df
  - B. Load <workspace-root-path>/src/adettdb/temp-db-ctrl.df
  - C. Load <workspace-root-path>/src/dynamics/db/icf/dump/tempdbct.d into the temp-db-ctrl table
4. Set the database connections in the workspace.



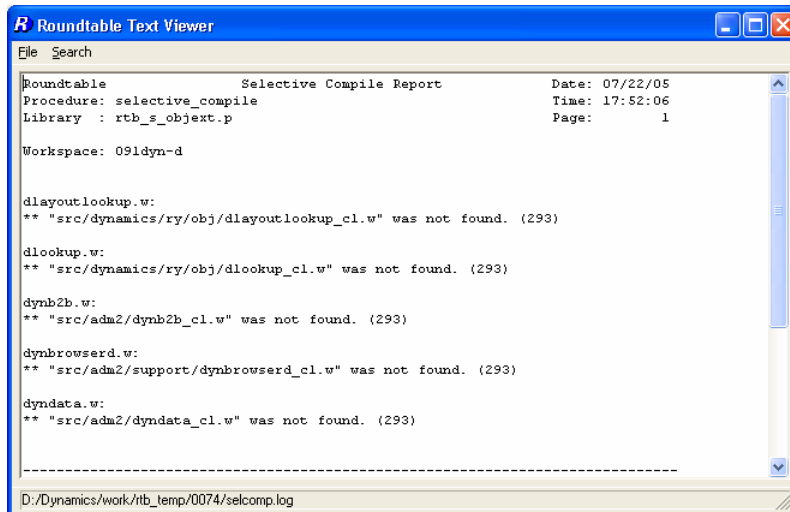
#### 4.1.7 Compile the workspace

1. Re-select the **092dyn-dep** workspace
2. Login to Dynamics as user **admin**
3. Start **Selective Compile** and compile all of the objects in the workspace.





4. The errors shown below are normal and can be ignored.



5. Once the workspace has successfully compiled, the creation and setup of the 092dyn-dep receipt partner workspace is complete.
6. The Dynamics framework and tools should all be runnable from this workspace.

## 5 Migrating workspaces to 10.1A

### If you want to migrate all workspaces

This example is based on a Dynamics 10.0B03 workspace that is currently sourced from the 091dyn-dep receipt workspace. The example explains how to convert an existing set of workspaces from Dynamics 10.0B03 to OpenEdge 10.1A.

It should be noted that the ability to maintain the managed application and deploy to application end-users using Dynamics 10.0B03 will no longer be possible. End-users will have to be migrated to OpenEdge 10.1A before they can receive any application updates.

Important notes regarding this migration strategy:

- Before starting the migration, complete all open tasks in the workspace and create a release.
- It is strongly advisable to make a backup of the workspace databases (especially the ICFDB) before starting the migration.
- In order to prevent the Dynamics integration hooks from attempting to fire and raising r-code version errors, the automatic connection of the ICFDB database in the workspace is temporarily suspended during the migration process.

### 5.1 Disable Integration Hooks

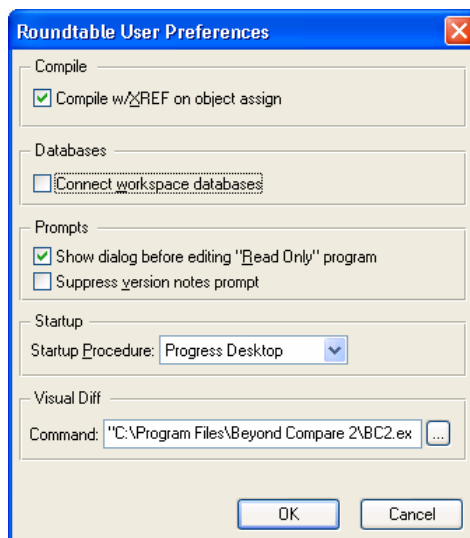
The initial part of the import process requires that the contents of the 092dyn-dep workspace are imported without making changes to the ICFDB databases. This is necessary because there are special upgrade steps to be taken in the migration of an ICFDB repository from 10.0B03 to 10.1A. This can be done by disabling the integration between Roundtable and Dynamics during the import process.

The easiest way to disable the integration between Roundtable and Dynamics is to set Roundtable to not connect to the workspace databases when a workspace is selected.

This is a user based option that has to be set for the user doing the migration – typically the sysop user.

Start a Roundtable session

1. Select **Admin → Preferences**.
2. Uncheck the **Connect workspace databases** toggle.



3. Press **OK**.

This will prevent the ICFDB database from being connected when the workspace is next selected, and the Dynamics integration hooks will not fire.

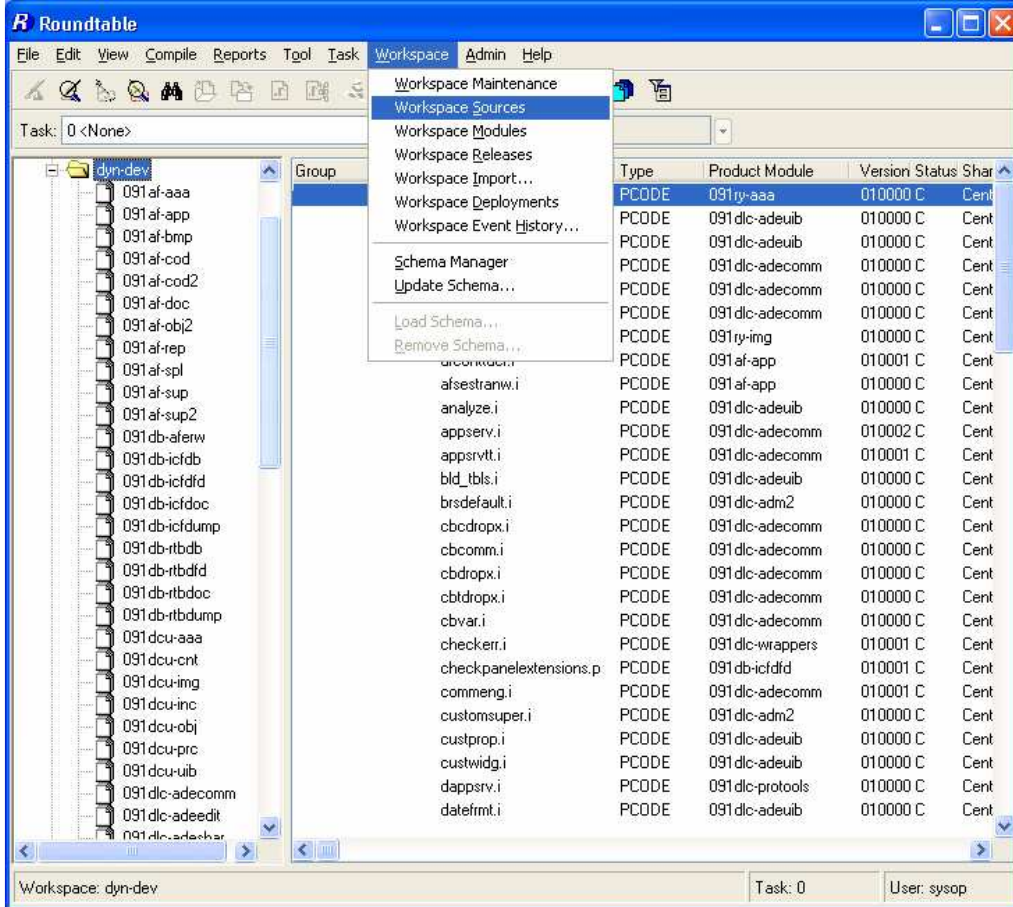
4. Exit from Roundtable

## 5.2 Framework Workspace Sources

### 5.2.1 Dynamics Framework Workspace Sources

Select the workspace to be migrated. For example **dyn-dev**.

1. Select **Workspace** → **Workspace Sources**.



2. **EX**clude all 091dyn-dep products
3. In Workspace Sources, add workspaces sources from the **092dyn-dep source workspace** for all of the **092-prefixed** products. The table below summarizes the products to add.

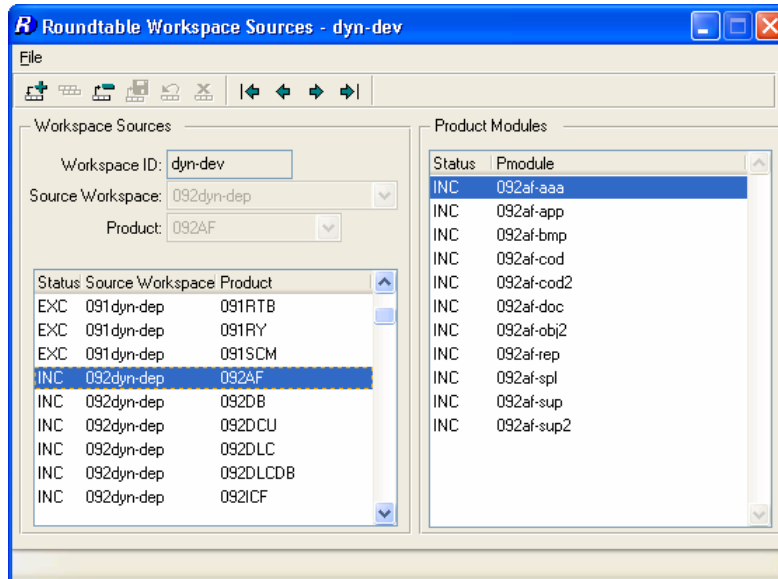


Source Workspace ID	Source Product
092dyn-dep	092AF
	092DB
	092DCU
	092DLC
	092DLCDB
	092ICF
	092RY
	*092RTB
	*092SCM

Make sure that the 092-prefixed products and not the 091 products are used as workspace sources.

*\* The RTB and SCM products are only needed if the Roundtable Dynamics integration code is to be customized. If not, then the objects contained in these products and modules are not needed for a standard configuration.*

The end result should look like the screen shot below.



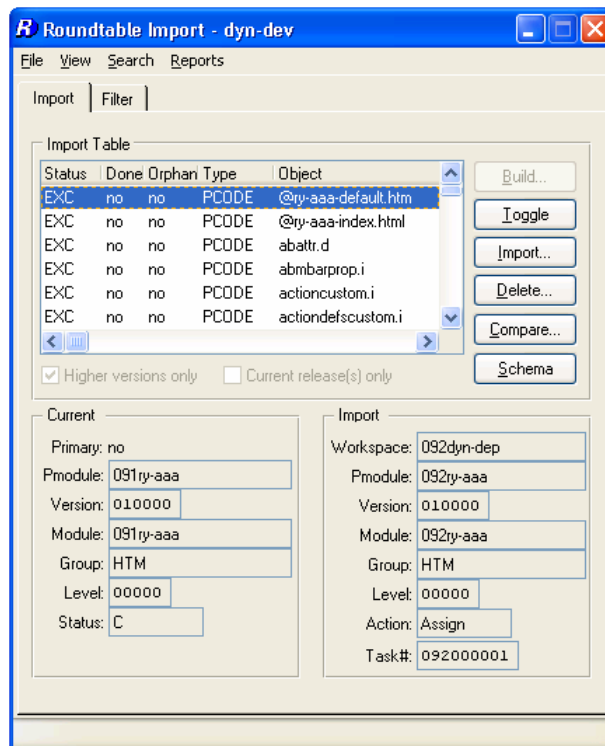
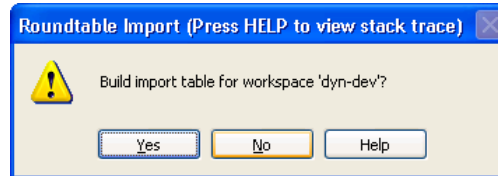
Note:

All of the sources have to be added individually to the workspace SOURCES. They are no longer all added when the first product from a source workspace is selected.

4. Close the **workspace sources** window and reselect the workspace.

## 5.2.2 Import from New Source

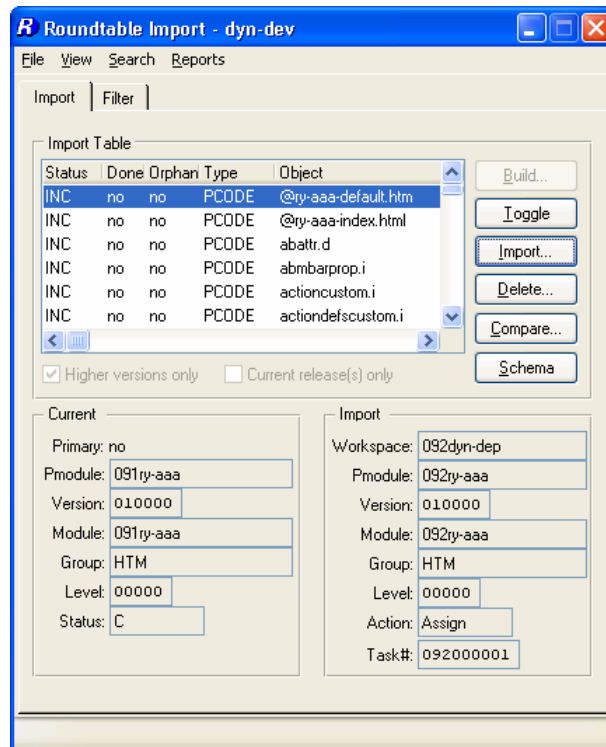
1. Select **Workspace** → **Workspace Import**
2. Press **Build** to build a new import control table.



### 5.2.2.1 Include all objects

Most of the objects will be flagged as **EXC** initially. This is because the majority of the new objects have the same name as existing objects, but belong to different product modules.

1. Select **File** → **Include All** to change them to **INC**.



### 5.2.2.2 Exclude Objects with Custom Variants

1. Individually select all objects in the list for which you have created custom variants, and Toggle to **EXC**.

### 5.2.3 Import

1. Select **Import**.
2. On completion, delete the import table

## 5.3 Updating Custom Variants – Part 1

Follow these steps if any custom variants of Dynamics framework objects have been created in this workspace.

New OpenEdge custom variant products (that are based on the new 092-prefixed product modules) and product modules need to be created, and the custom variant objects need to be assigned to these new Roundtable product modules. This is necessary because the existing custom variant products and modules are very likely linked to 090-prefixed or 091-prefixed workspace modules at the moment.

### 5.3.1 New OpenEdge custom Products and Modules

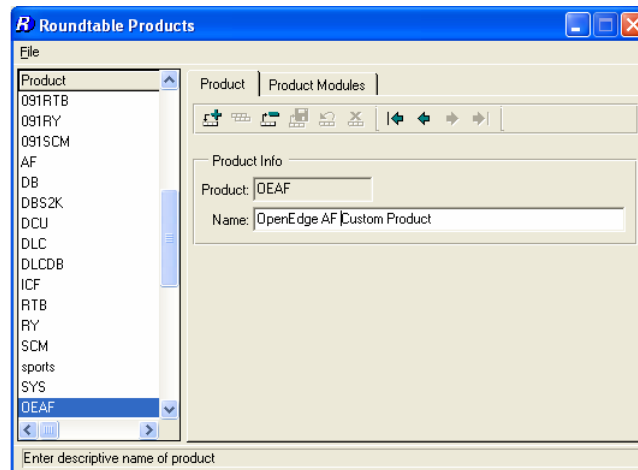
Create new Roundtable Product(s) and Product Modules for the OpenEdge versions of the custom variants.

1. When creating the Product Modules, ensure that the appropriate 092 Product Module (not 091) is selected for the Workspace Module Definition.

For example:

Product:

**OEAF**

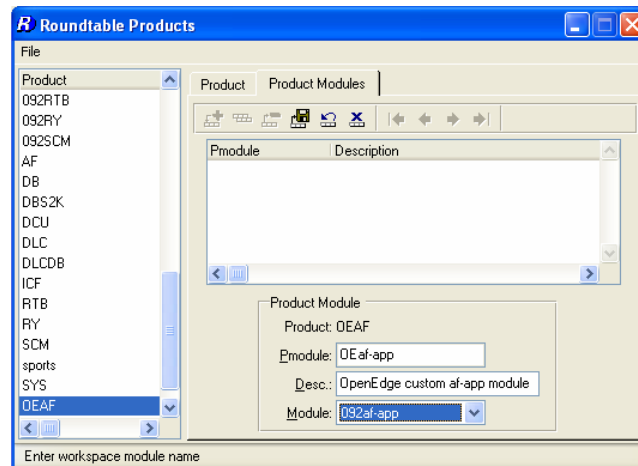


Product Module:

**OEaf-app**

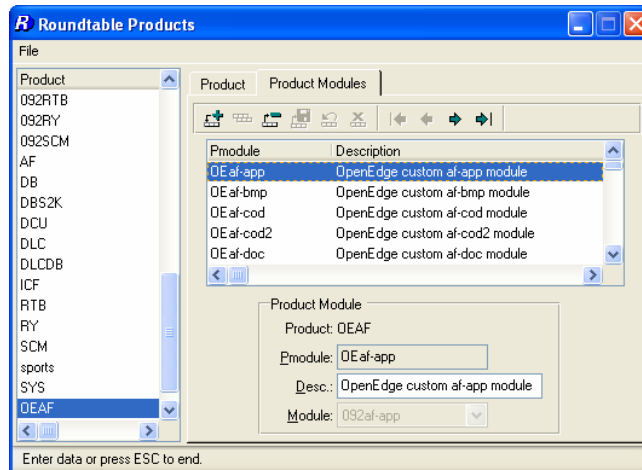
Workspace Module Definition:

**092af-app**

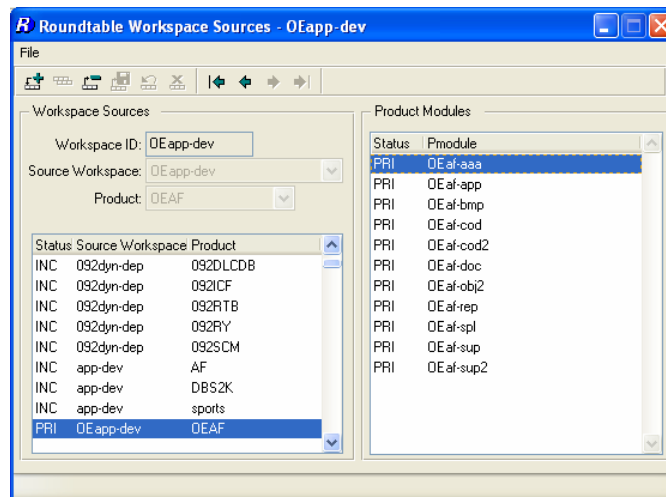


**Note:** Re-using the 092af-app workspace module in the example above reduces the number of workspace modules shown in the RTB tabletop.

**Note:** It is a good idea to create a full set of custom variant product modules when a new custom variant product is created. This reduces the administrative overhead of adding new product modules to workspaces later.



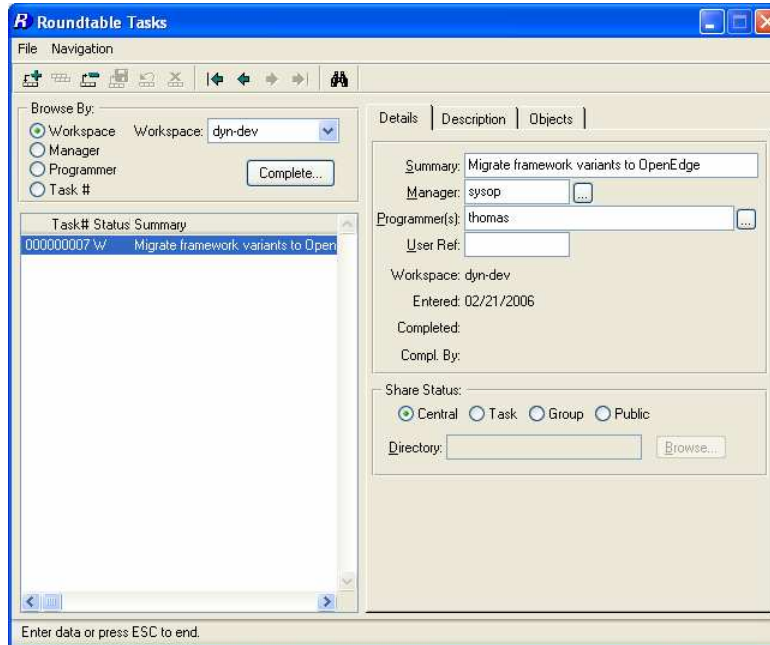
Add the new Product(s) as primary source products in **Workspace Sources**.



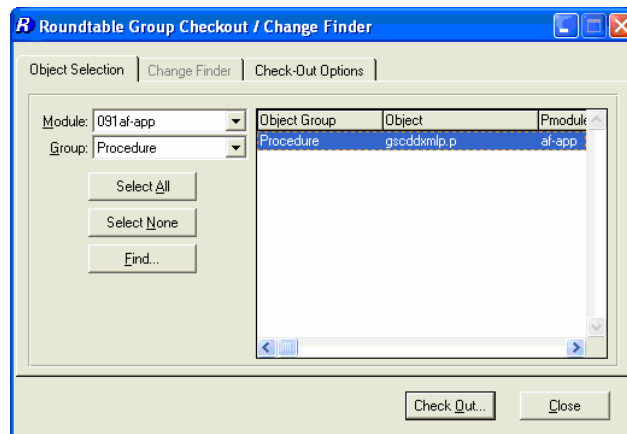
### 5.3.2 Creating new object variants

The custom variant products now have to be moved to the new product modules so that they can be updated in this workspace. Follow the steps below to do this.

1. Create a new task for the migration of the custom variants.

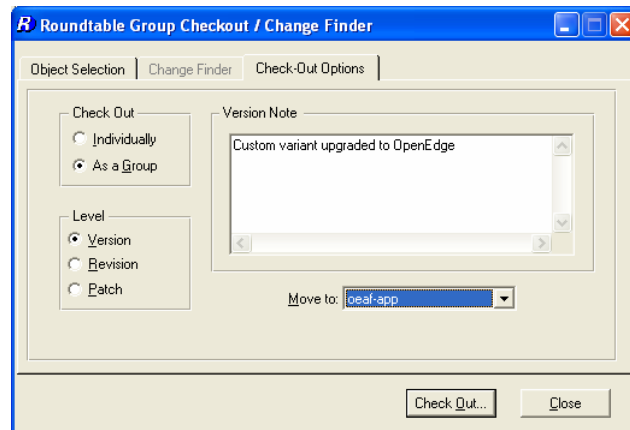


2. Return to the tabletop and **select the new task**.
3. Select a product module from the **Roundtable Tabletop** and go to **Tool → Group Checkout...**
4. Select the first 091 Product Module that contains custom variants (e.g. 091af-app)



5. Select the custom variant objects that you wish to migrate.
6. On the **Check Out Options** page, select the following options:
  - A. **Check Out:** As a Group
  - B. **Level:** Version (this setting will not make any difference as new variants are always created as version 01.00.00)
  - C. **Version note:** Add common version notes for the new variant objects.

D. **Move to:** The new product module the object(s) are to be moved to (e.g. *OEaf-app*).



7. Press the **Check Out** button to check out and move the objects
8. Repeat these steps for custom variants in any other product modules.
9. Close the **Group Checkout** window and return to the Tabletop and make sure the task is selected.

The new custom variant objects will need to be updated with code changes between Dynamics 10.0B03 and OpenEdge 10.1A. This cannot be done until the workspace database have been created and set up, and the workspace contents have been compiled.

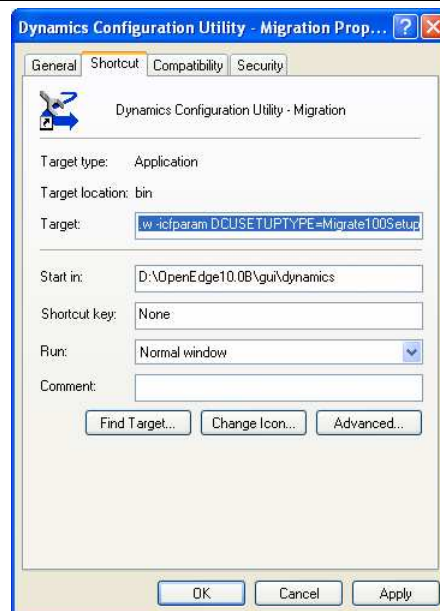
## 5.4 DCU Upgrade – Phase 1

A specially modified version of the DCU shortcut must be used to correctly migrate the ICFDB from 10.0B03 to 10.1A.

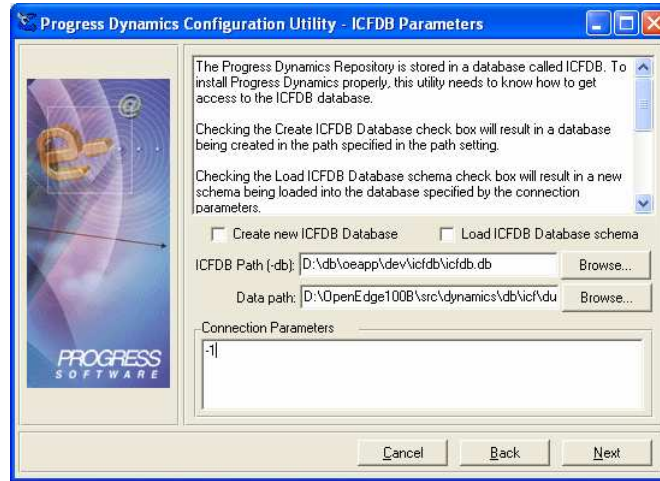
Start with a copy of the OpenEdge 10.1A DCU shortcut

1. Open the shortcut properties and edit the Target command
2. Change the `-icfparam` parameter to read:

```
-icfparam DCUSETUPTYPE=Migrate100Setup
```

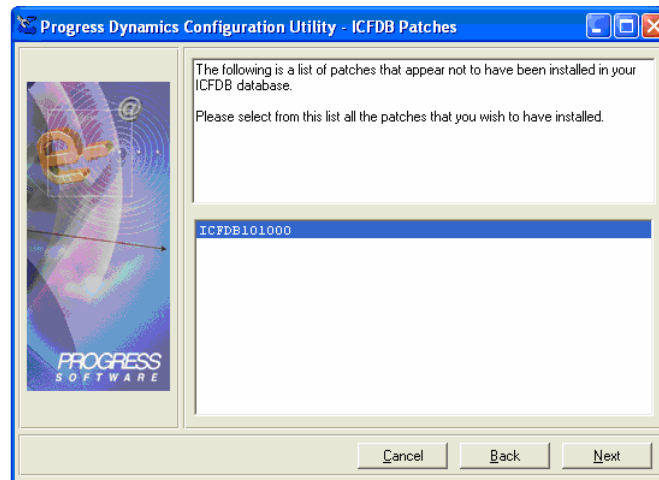


3. **Run the DCU** from this special shortcut and upgrade the newly copied and converted ICFDB database for the new workspace.





The DCU will load the following patches: ICFDB101000

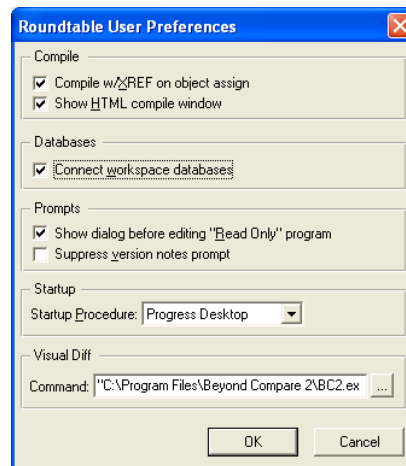


4. Once the ICFDB database has been migrated set the database connection parameters in Roundtable for each of the **PDBASE** objects.

## 5.5 Re-enable Integration Hooks

Select **Admin** → **Preferences**

1. Check the **Connect to workspace databases** toggle.

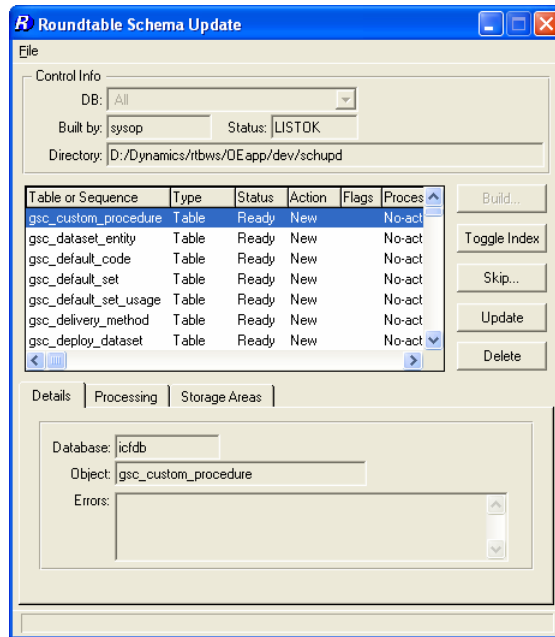


2. Press **OK**.

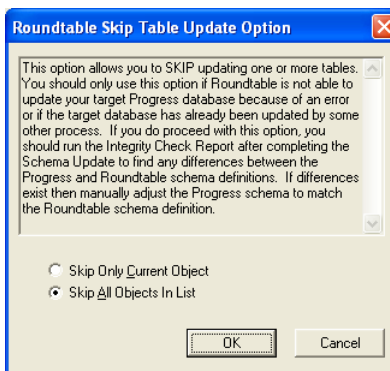
This will restore the connection to the ICFDB database, and the Dynamics integration hooks will fire when the workspace is next selected.

## 5.6 Roundtable Update Schema

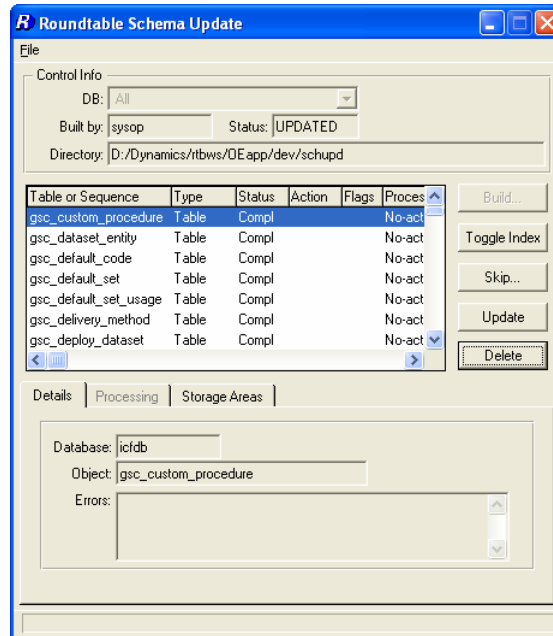
1. Re-select the workspace
2. Do not login to Dynamics. Select **Cancel** in the Dynamics login window
3. Run **Update Schema** in the workspace for the ICFDB and temp-db databases.



4. Be sure to select **Skip** → **Skip All Objects in list**.



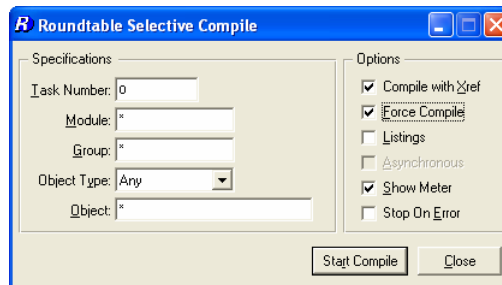
Remember to **delete** the contents of the **Schema Update** table.



## 5.7 Selective Compile

Now that the databases are connected and updated to OpenEdge, it is necessary to compile the contents of the workspace before continuing the second stage of the DCU upgrade.

Use **Selective Compile** to compile all of the objects in the workspace.



## 5.8 DCU Upgrade – Phase 2

### 5.8.1 Phase 2 manual preparation

Manual preparation must be done before loading the ado into the ICFDB. The following code must be run to remove the missing ADOs from the status file in the ICFDB db. The following steps summarize how to do this.

Reselect the workspace.

1. Do not log in to Dynamics. Select **Cancel** in the Dynamics login window.
2. Open the **procedure editor** and run the following code.

```
/* Code to remove missing ADOs files for DCU Phase 2 upgrade */
FOR EACH ryt_dbupdate_status WHERE
    ryt_dbupdate_status.file_name BEGINS "scm/rtb":U EXCLUSIVE-LOCK:
DELETE ryt_dbupdate_status.
END.
```

## 5.8.2 Performing DCU Phase 2

After the manual preparation the ADOs will be loaded into the ICFDB. Follow these steps to finish the DCU phase 2 upgrading.

1. Reselect the workspace
2. Login to Dynamics as an administrative user



3. Phase 2 of the DCU will load 3,458 ADOs into the ICFDB  
If any objects failed to compile earlier, run another selective compile now.

## 5.9 Custom Variants – Part 2

### 5.9.1 SCM Xref

Every Dynamics product module that contains custom variants needs to be cross-referenced with the relevant new Roundtable product module that you have created.

1. Run the **Product Module Xref** tool from the **Development/SCM** menu
2. Select each Dynamics product module that contains custom variants
3. Modify the mapping to point to the relevant new OpenEdge custom variant module.

For example:

Dynamics Product Module: **af-cod2**

Old SCM Product Module: **af-cod2**

New SCM Product Module: **OEaf-cod2**

### 5.9.2 Review Custom Variants

It is important to review the code in all custom variants that have been migrated and ensure that the customizations are in sync with this version of Dynamics. Test any code changes that are made to confirm that the objects function as expected.

Note that the source link from the 10.0B03workspace was severed by the product module reassignment, and any further modifications of the custom variants must be made directly in this workspace.

For each of the new custom variants, compare them with the original objects from 092-prefixed product module and update the object code to include any changes that have been made to the objects between Dynamics 10.0B03 and OpenEdge 10.1A.

**TIP:** This can be done using a comparison tool and comparing the new custom variant object with the corresponding object in the 092dyn-dep workspace.

Make sure the code changes are compiled and tested to make sure the customizations do not break anything. It may not be possible to complete the testing until the databases have been connected and the contents of the workspace have been compiled.

### 5.9.3 Check in Custom Variants

Go to **Task Maintenance** in Roundtable

1. Highlight the task that was created for migrating custom variants

2. Select the **Complete Task** option
3. When prompted whether to export object information from the Dynamics repository, select **Export All**

#### 5.9.4 Clear Old Products and Modules

Remove the old 091 custom variant product(s) from this workspace.

In **Workspace Sources**, highlight each 091 custom variant product (e.g. spAF)

1. Select **Delete Source...**

#### 5.10 Remove old framework objects

Some 091 modules might still show in the Module list under the workspace. Only obsolete objects remain in these modules. The objects can be removed manually from the workspace:

1. Highlight each object
2. Select **File → Delete Object**.

After this the 091 modules should no longer appear in the Module list in the Object in Module view.

After the migration, the old *icf* directory and sub-directories will be left behind in the workspace with all of the old r-code files. The *icf* directory (including all sub-directories and files) can be removed now.

#### 5.11 Release

1. Create a **release** in the migrated workspace.

### 6 Follow-on workspaces

These steps apply to a Dynamics 10.0B03 workspace that is sourced from an already-migrated 10.1A application workspace. Please refer to the previous section if more detail is required for any step.

#### 6.1 Disable Integration Hooks

Start a Roundtable session from your Progress 10.0B03 shortcut

1. Select **Admin → Preferences**.
2. Uncheck the **Connect workspace databases** toggle.
3. Press **OK**.
4. This will prevent the ICFDB database from being connected when the workspace is next selected, and the Dynamics integration hooks will not fire.
5. Exit from Roundtable

#### 6.2 Start a Roundtable session from your 10.1A shortcut

#### 6.3 Update Workspace Sources

1. Select the workspace that is being migrated
2. Select **Workspace → Workspace Sources**
3. **EX**clude all 091 Products
4. Ensure that all 092 Products are **IN**cluded

5. Ensure that any **new custom variant Products** (based on 092 Products) are **INCLUDED**

## 6.4 Workspace Import

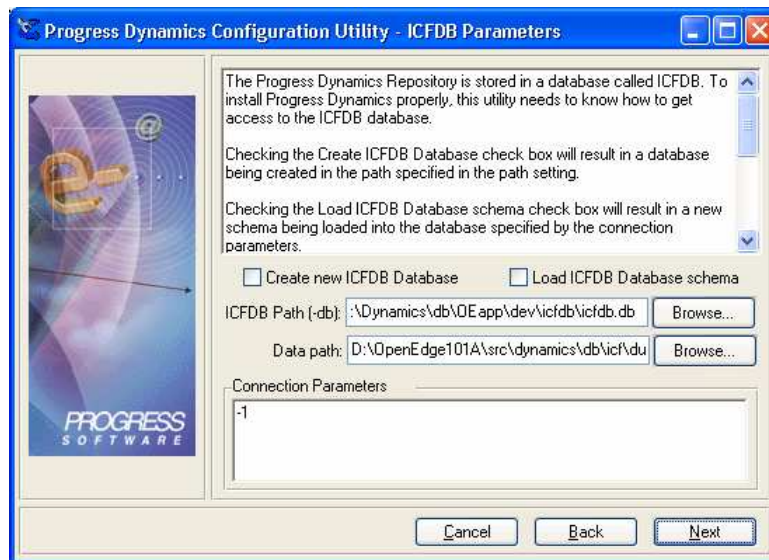
### 6.4.1 Include all objects

1. Select **Workspace → Workspace Import**
2. Using the default settings, Build an **Import Control Table**.
3. Most of the objects will be flagged as **EXC** initially.
4. Select **File → Include All** to change all object statuses to **INC**
5. Import all of the objects in the **import control table**.
6. Once the import process is complete, **delete** the contents of the **import control table**.

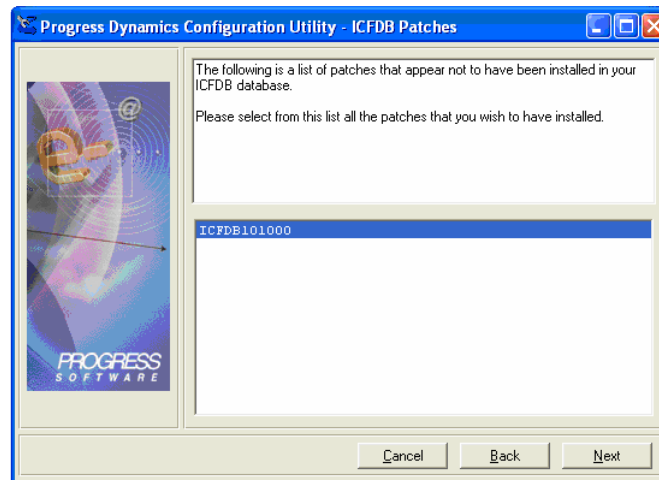
## 6.5 DCU Upgrade – Phase 1

Use the previously created specially modified version of the DCU shortcut to migrate the ICFDB from 10.0B03 to 10.1A.

Run the DCU from this special shortcut and upgrade the newly copied and converted ICFDB database for the new workspace.



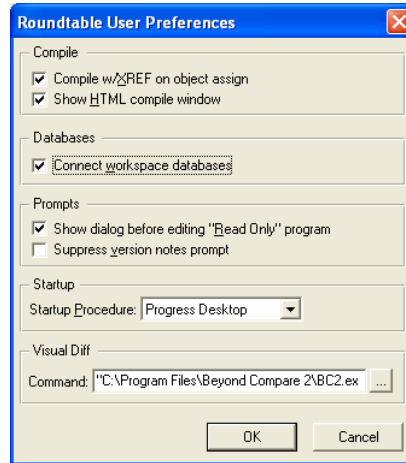
The DCU will load the following patches:ICFDB101000



Once the ICFDB database has been migrated set the database connection parameters in Roundtable for each of the **PDBASE** objects.

## 6.6 Re-enable Integration Hooks

1. Select **Admin → Preferences**.
2. Check the **Connect workspace databases** toggle.

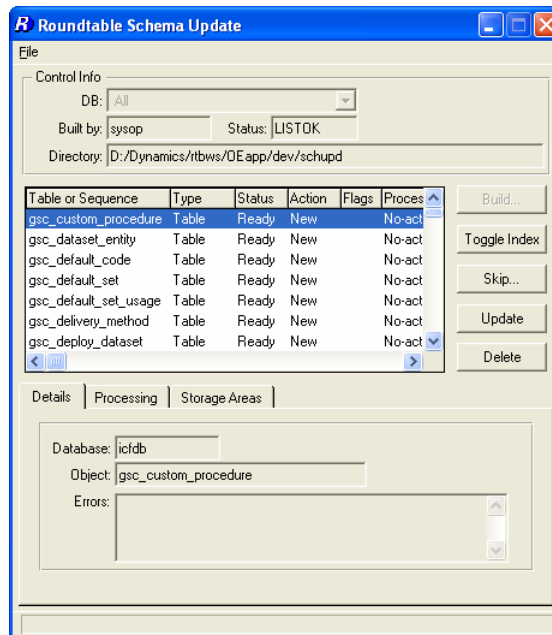


3. Press **OK**.

This will restore the connection to the ICFDB database, and the Dynamics integration hooks will fire when the workspace is next selected.

## 6.7 Roundtable Update Schema

1. Re-select the workspace.
2. Do not login to Dynamics. Select **Cancel** in the Dynamics login window.
3. Run **Update Schema** in the workspace for the ICFDB and temp-db databases.

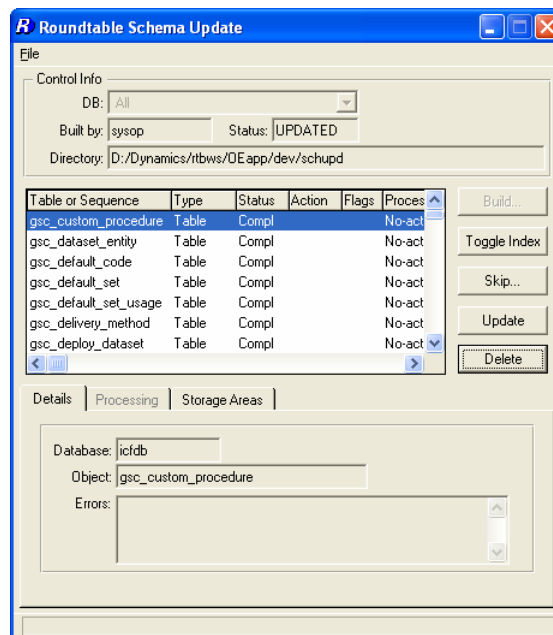




4. Be sure to select **Skip → Skip All Objects in list.**



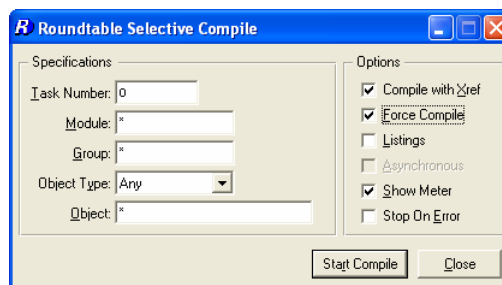
5. Remember to **delete** the contents of the **Schema Update table.**



## 6.8 Selective Compile

Now that the databases are connected and updated to OpenEdge, it is necessary to compile the contents of the workspace before continuing the second stage of the DCU upgrade.

1. Use **Selective Compile** to compile all of the objects in the workspace.



## 6.9 DCU Upgrade – Phase 2

1. Reselect the workspace
2. Login to Dynamics as an administrative user



3. Phase 2 of the DCU will load 3,458 ADOs into the ICFDB  
If any objects failed to compile earlier, run another selective compile now.

## 6.10 Custom Variants from Source

Custom variants from the source workspace will be imported already migrated.

### 6.10.1 SCM Product Module Xref

1. Run the **SCM Product Module Xref** tool from the **Development/SCM** menu
2. Select each Dynamics product module that contains custom variants
3. Modify the mapping to point to the relevant new OpenEdge custom variant module.

### 6.10.2 Clear Old Product Modules

In Workspace Sources, **EX**clude the old 091 custom variant products

## 6.11 Release

Create a **release** in this workspace.

## 7 Technical Support

### 7.1 Dynamics Support

Issues with core Dynamics functionality and upgrading Dynamics repositories or code, which do not have anything to do with the use of Roundtable and Dynamics should be directed to Progress Software Corporation's Technical Support.

<http://www.progress.com/support>

### 7.2 Roundtable Dynamics Support

The Roundtable Dynamics integration using Roundtable 10.0A02 or higher and OpenEdge 10.0B01 or higher is now supported by Roundtable Technical Support.

The following kinds of issues can be directed to Roundtable Technical Support:

- Issues related to the use of the core Roundtable product
- Issues related to the use of the Roundtable Dynamics integration
- Enhancement requests to Roundtable or the Roundtable Dynamics integration

Contact details for Roundtable Technical Support can be found at:

<http://www.roundtable-tsms.com/support>.