

Progress Dynamics[®] for OpenEdge[™] Architect 10.1B Software Configuration Management

**Roundtable[®] TSMS and Progress Dynamics for
OpenEdge Architect Installation and Setup**

Version: 1.0

Last Updated: February 2007

Copyright © 2007 by Ledbetter & Harp LLC

Roundtable® software products are licensed by Tugboat Software Inc. and copyrighted by Ledbetter & Harp LLC, with all rights reserved. This document is also copyrighted and all rights are reserved. This document may not, in whole or in part, be copied, photocopied, translated, or reduced to any electronic medium or machine-readable form without prior consent, in writing, from Tugboat Software or Ledbetter & Harp LLC.

The information in this document is subject to change without notice, and neither Tugboat Software, nor Ledbetter & Harp LLC assume responsibility for any errors that may appear in this document.

February 2007

Roundtable® is a registered trademark of Ledbetter & Harp LLC.

Microsoft Windows is copyrighted by Microsoft Corporation. Microsoft is a registered trademark of Microsoft Corporation. Windows is a trademark of Microsoft Corporation.

PROGRESS is a registered trademark of Progress Software Corporation.

UNIX is a registered trademark of The Open Group in the United States and other countries.

All company and product names are the trademarks or registered trademarks of their respective companies.

Tugboat Software
3300 Irvine Boulevard
Suite 288
Newport Beach, CA 92660-3112

Version: 1.0

Last Updated: February 2007

Contents

1	INTRODUCTION	4
2	PREREQUISITES.....	4
2.1	PRODUCTS.....	4
2.1.1	<i>OpenEdge 10.1B</i>	<i>4</i>
2.1.1.1	OpenEdge Architect 10.1B	4
2.1.2	<i>Roundtable TSMS 10.1B.....</i>	<i>4</i>
2.1.2.1	Roundtable 10.1B Windows installation.....	4
2.1.2.2	Roundtable 10.1B AppServer	5
2.1.3	<i>Roundtable Dynamics environment for OpenEdge 10.1B.....</i>	<i>5</i>
2.1.4	<i>Roundtable Dynamics Add-On Package 10.1B.....</i>	<i>5</i>
3	INSTALLATION INSTRUCTIONS	6
3.1	ROUNDTABLE EVENT HANDLER EXTENSIONS.....	6
3.2	ROUNDTABLE REPOSITORY ACCESS.....	7
3.3	ROUNDTABLE CONFIGURATION PROJECT SETUP	10
3.3.1	<i>Creating a Roundtable OpenEdge project and editing project properties</i>	<i>10</i>
3.3.2	<i>Basic project settings</i>	<i>12</i>
3.3.3	<i>Enabling Progress Dynamics.....</i>	<i>14</i>
4	RELATED DOCUMENTATION	19

1 Introduction

Roundtable TSMS® is a software configuration management (SCM) package designed specifically for the Progress® 4GL and RDBMS. Roundtable integrates with the Progress development environment seamlessly and provides programmers, quality assurance staff, and managers with a wide range of powerful tools to develop and manage deployment of software applications.

This white paper describes the steps involved in setting up and configuring Progress Dynamics® (OpenEdge Architect Release 10.1B) to work within a Roundtable environment using the Roundtable plug-in for OpenEdge Architect.

This white paper assumes knowledge of Roundtable and does not attempt to explain any of the Roundtable terms used or how to use Roundtable in general. For that level of information, please see the Roundtable product documentation.

It is also important to note that this paper is not intended to be complete documentation on how to use Roundtable and Dynamics. It complements the information in the product documentation set. In addition, users, especially system administrators, should have working knowledge and experience with the use and configuration of Roundtable before attempting the procedures documented here.

The Roundtable plug-in environment described in this setup document is not a replacement for the Roundtable Windows GUI client for OpenEdge 10.1B. It is a developers supplement to the standard Windows installation of a Roundtable and Dynamics environment. It is critical that all of the pre-requisites listed in the next section are met for this environment to be set up successfully.

2 Prerequisites

There are a number of pre-requisites to using the Roundtable and Dynamics integration in the OpenEdge Architect and Roundtable plug-in environment. All of the pre-requisites listed in this section must be met in order for development on Dynamics based applications to be possible from within OpenEdge Architect.

2.1 Products

The following products are needed in order to complete the installation of a Roundtable and Dynamics environment for OpenEdge Architect 10.1B successfully.

2.1.1 OpenEdge 10.1B

OpenEdge 10.1B and OpenEdge 10.1B Dynamics with the latest service pack must be installed.

2.1.1.1 OpenEdge Architect 10.1B

OpenEdge Architect 10.1B must be correctly installed and configured prior to setting up the Roundtable Dynamics environment.

2.1.2 Roundtable TSMS 10.1B

2.1.2.1 Roundtable 10.1B Windows installation

Roundtable 10.1B for Windows must be installed and configured. Roundtable must be set up and configured so that all setup, maintenance and workflow tasks can be performed from the traditional Roundtable Windows environment.

Versions of Roundtable prior to 10.1B cannot be used for this environment.

All Roundtable workspaces to be accessed from the OpenEdge Architect environment must be fully configured with database connections and appropriate path settings prior to setting them up as OpenEdge Architect projects.

2.1.2.2 Roundtable 10.1B AppServer

An AppServer running on OpenEdge 10.1B, which is connected to the Roundtable repository, and with the Roundtable installation paths in the PROPATH is needed for accessing Roundtable from OpenEdge Architect.

Steps for setting this up can be found in the Installation Guide for Roundtable 10.1B available on <http://www.roundtable-tsms.com/support>.

2.1.3 Roundtable Dynamics environment for OpenEdge 10.1B

A fully configured and functional Roundtable Dynamics environment using the Windows version of Roundtable 10.1B must be in place.

Details of the setup steps for configuring a new Roundtable Dynamics environment are available in the document "*Roundtable Dynamics 10.1B Installation Guide*" from <http://www.roundtable-tsms.com/support>.

2.1.4 Roundtable Dynamics Add-On Package 10.1B

The latest Roundtable Dynamics Add-on package for OpenEdge 10.1B and later must be installed and configured as part of the Windows Roundtable environment. The add-on package with instructions for installation can be downloaded from the Roundtable support website.

3 Installation instructions

If all of the pre-requisites listed in the previous section have been met, the steps in this section of the document can be used to setup the Roundtable Dynamics for OpenEdge Architect environment.

3.1 Roundtable event handler extensions

The Roundtable Dynamics integration is dependent on extensions to the event handler from the Roundtable plug-in. There are some files from the Roundtable Dynamics Add-on which have to be copied to the OpenEdge Architect installation.

Make a backup of the following file first:

```
<OE 10.1B >\oeide\architect\eclipse\plugins\com.openedge.pdt.text_10.1.1.00\runtime\_server.p
```

The following files from the Roundtable Dynamics Add-on:

- <Roundtable 10.1B install dir>\scm\custom_idertb_events.p
- <Roundtable 10.1B install dir>\scm\custom_server.p

should be copied to:

```
<OpenEdge 10.1B >\oeide\architect\eclipse\plugins\com.openedge.pdt.text_10.1.1.00\runtime
```

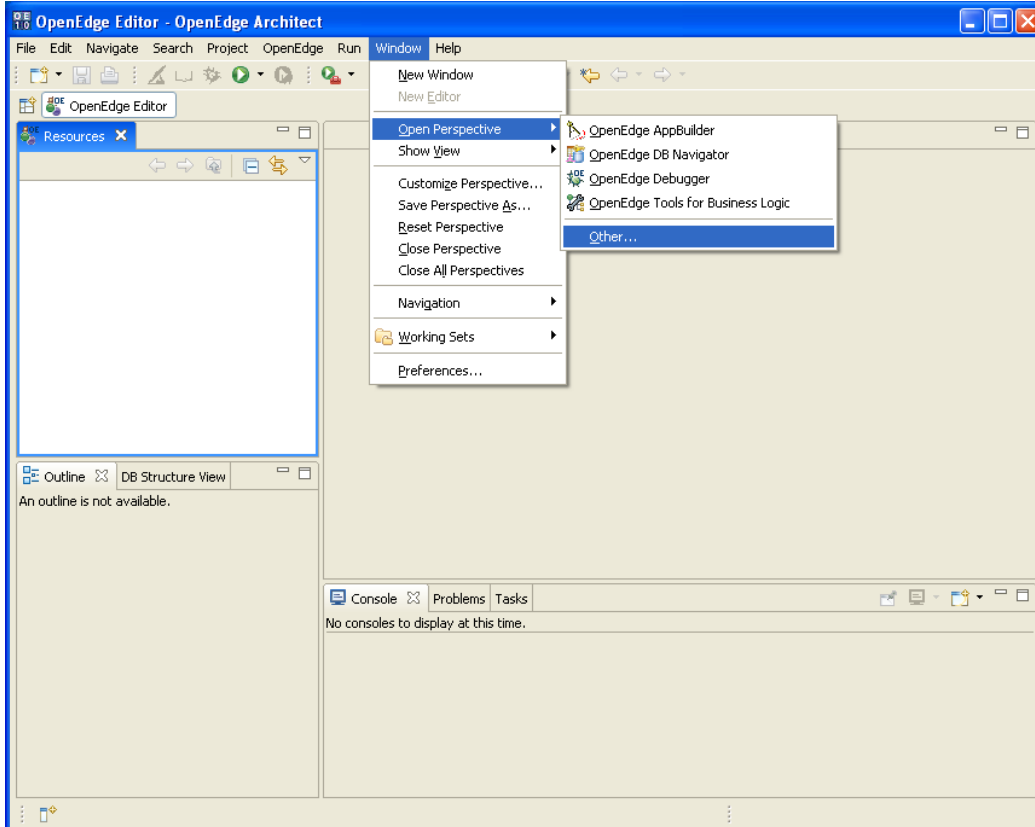
- *_server.p* is a standard OpenEdge 10.1B file that must be overwritten.
- *_idertb_events.p* is the Roundtable plug-in event handler file that provides the basic extensions to the plug-in to support Progress Dynamics.

NOTE: Neither of the two files need to be compiled. The OpenEdge Architect runtime extensions will execute the uncompiled procedures.

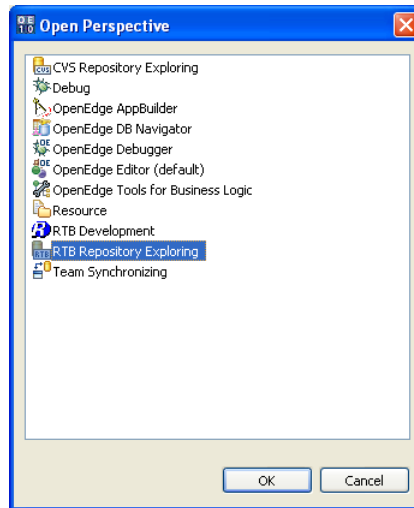
3.2 Roundtable repository access

Assuming that the Roundtable plug-in has been successfully configured, the first step is to set up a connection to the repository with the Dynamics based configurations.

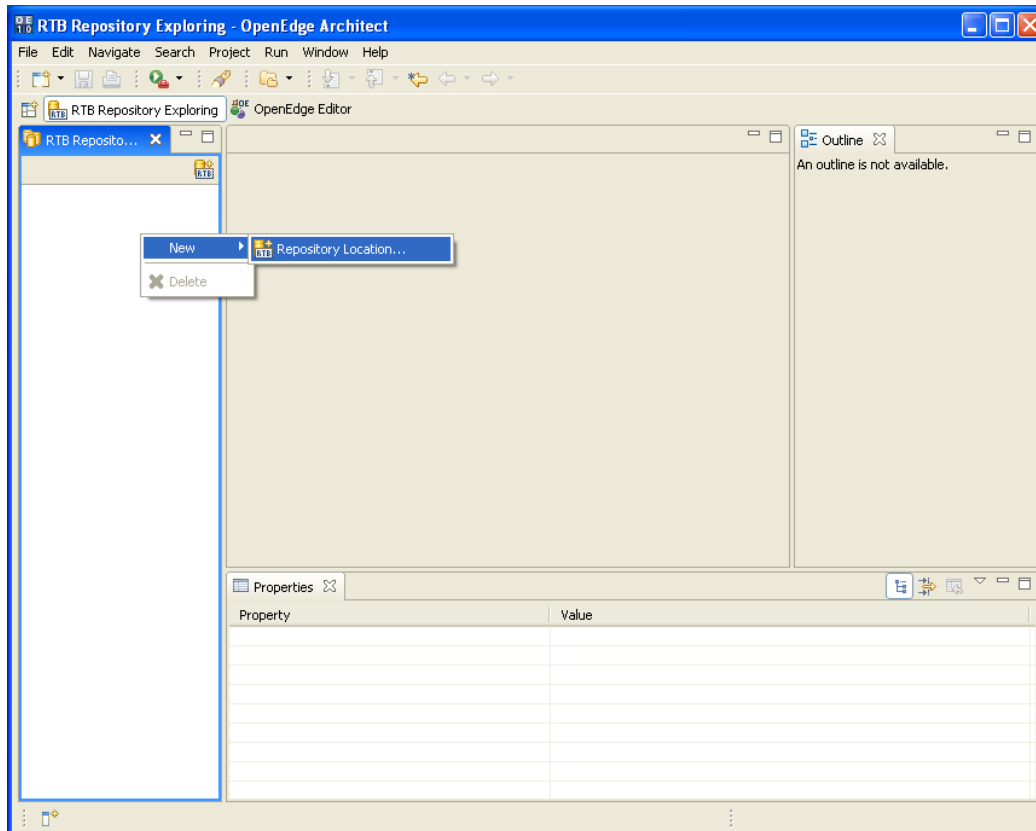
1. Start by opening a Roundtable Repository Explorer perspective. Select **Window → Open Perspective → Other...**



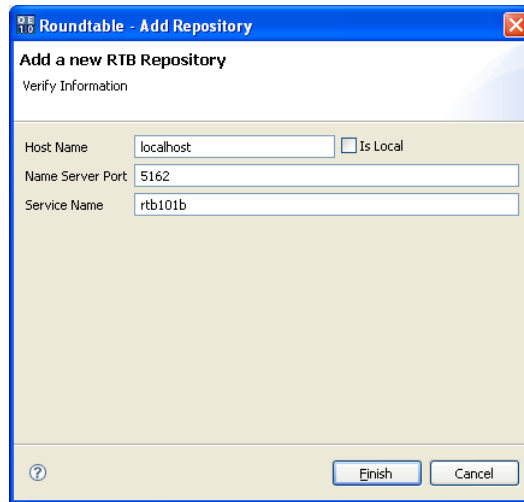
2. Select **RTB Repository Exploring**.



3. Add a new **Repository Location**



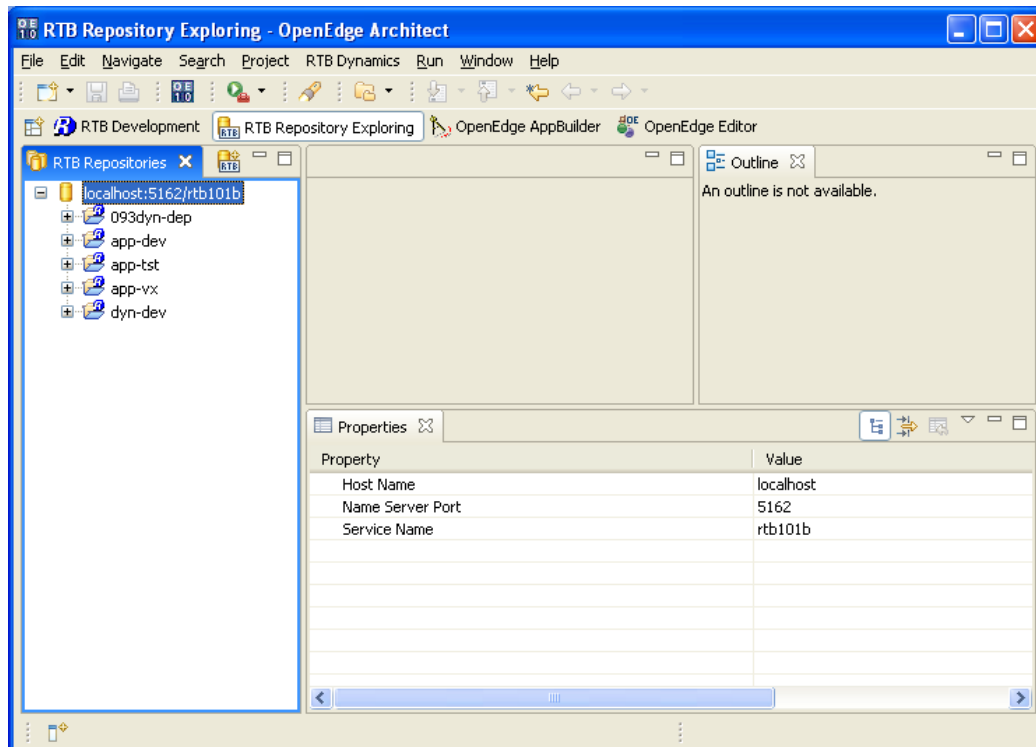
4. Enter the connection details for the AppServer connected to the repository.



5. Expand the repository treeview to **login** to the repository.



6. This will show a list of the RTB configurations that are available to create projects with.

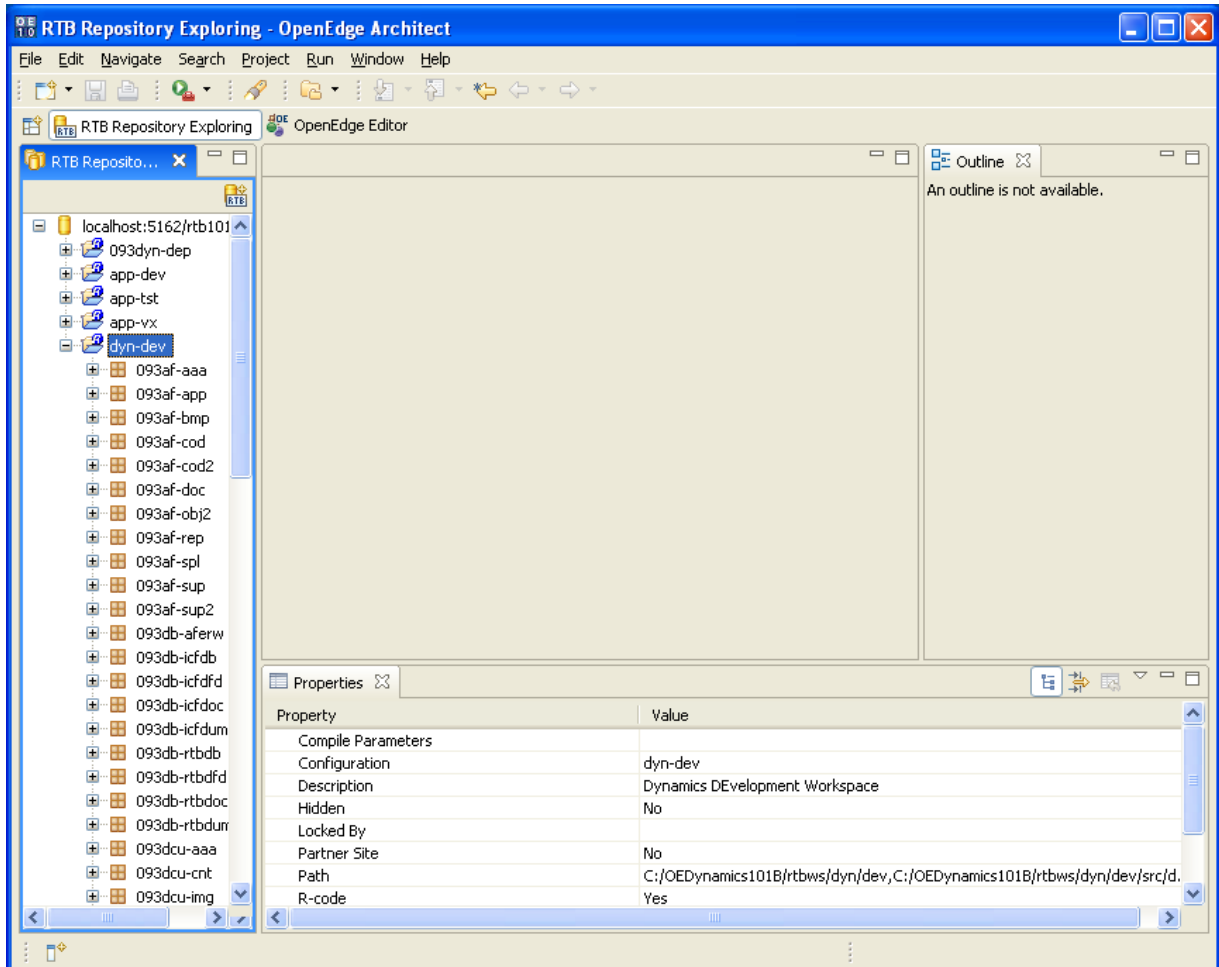


3.3 Roundtable configuration project setup

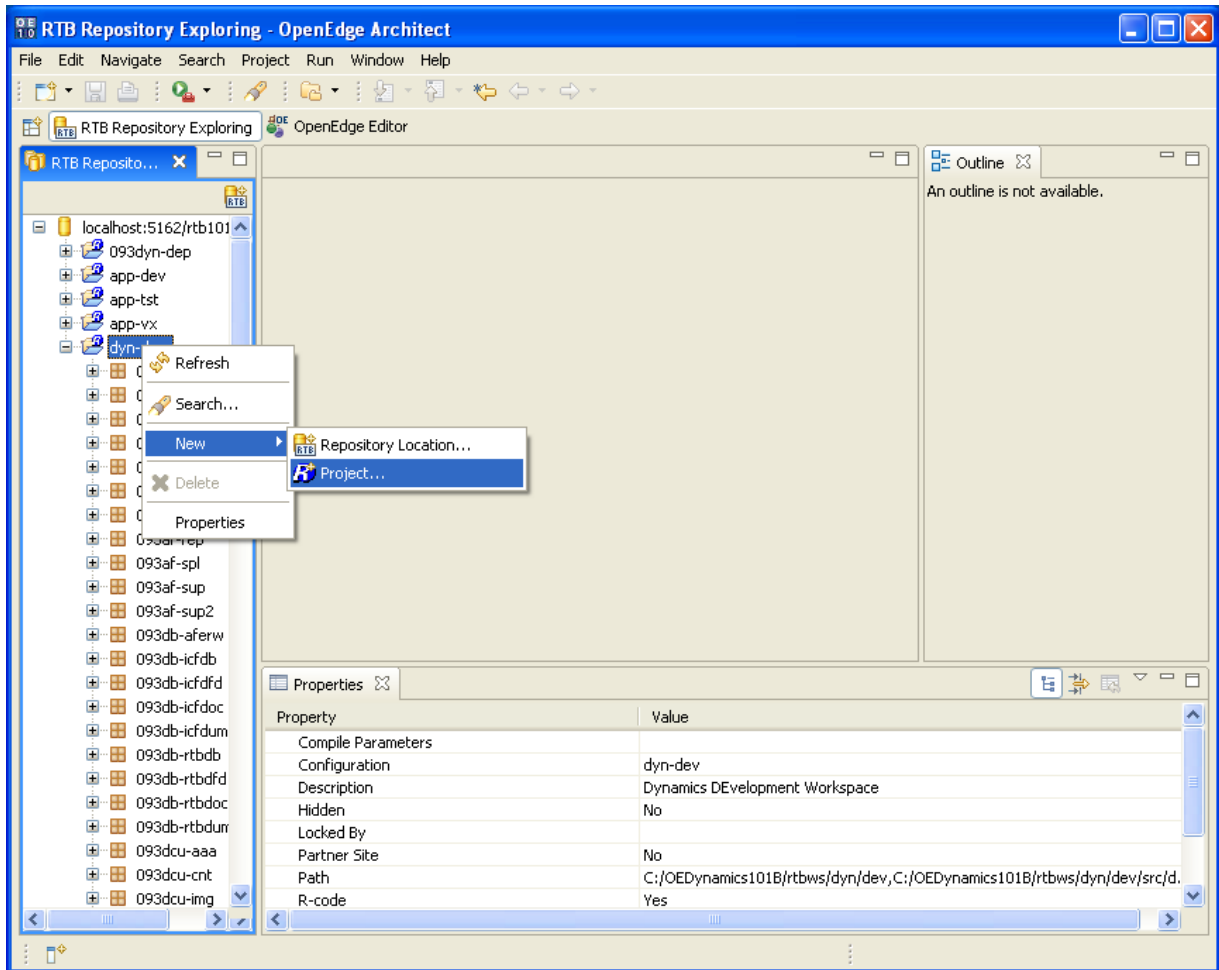
3.3.1 Creating a Roundtable OpenEdge project and editing project properties

The next step is to create a Roundtable OpenEdge project from a Roundtable configuration and set this up as a Dynamics project.

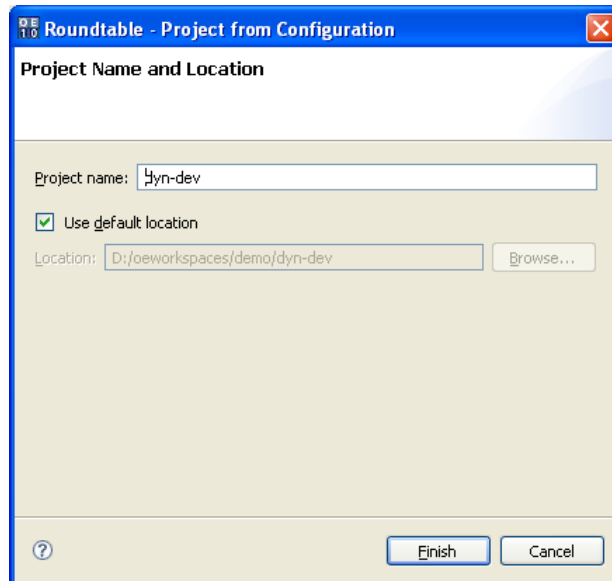
1. **Expand** the Roundtable repository to create a project for – in this example **dyn-dev**.



2. Right click on the configuration and select **New, Project**.



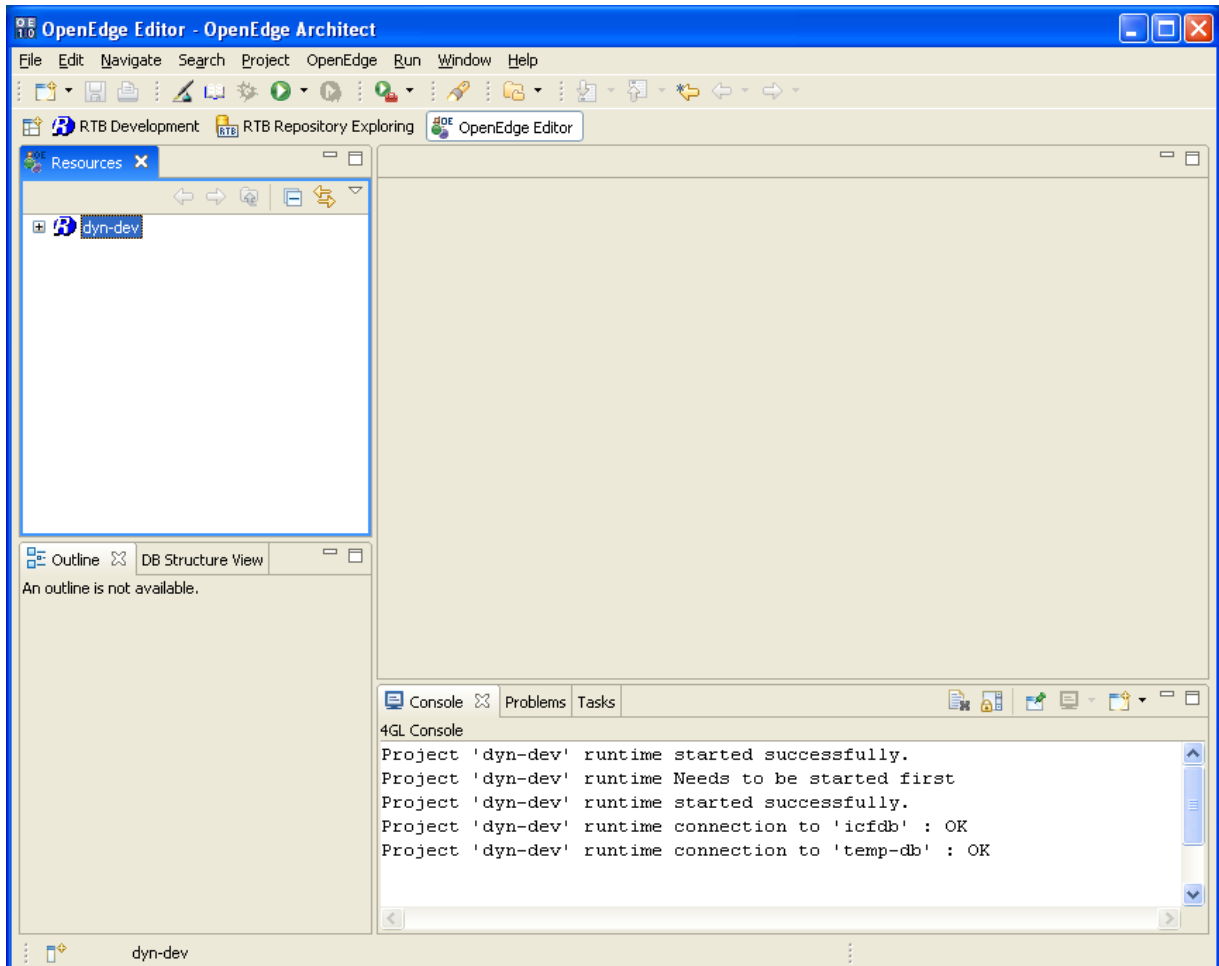
3. Enter the name of the Roundtable OpenEdge project e.g. **dyn-dev** (same as the configuration).



3.3.2 Basic project settings

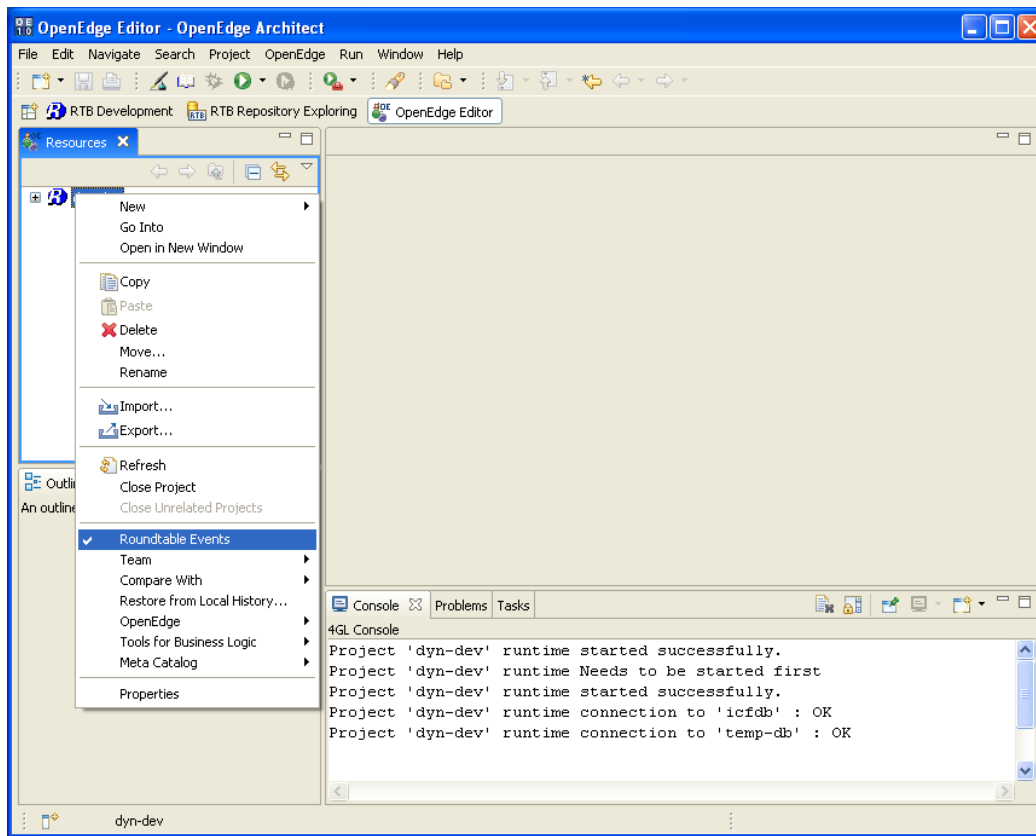
Next steps include completing the basic configuration of the project by logging into Roundtable and having the project inherit properties such as the PROPATH and database connections from the RTB configuration.

1. Go to the OpenEdge Editor perspective and select the resources view (if this is not open, then open it from the Window → Show View menu).



2. **Right click** on the project

3. Make sure that the **Roundtable Events** option is **turned on**.

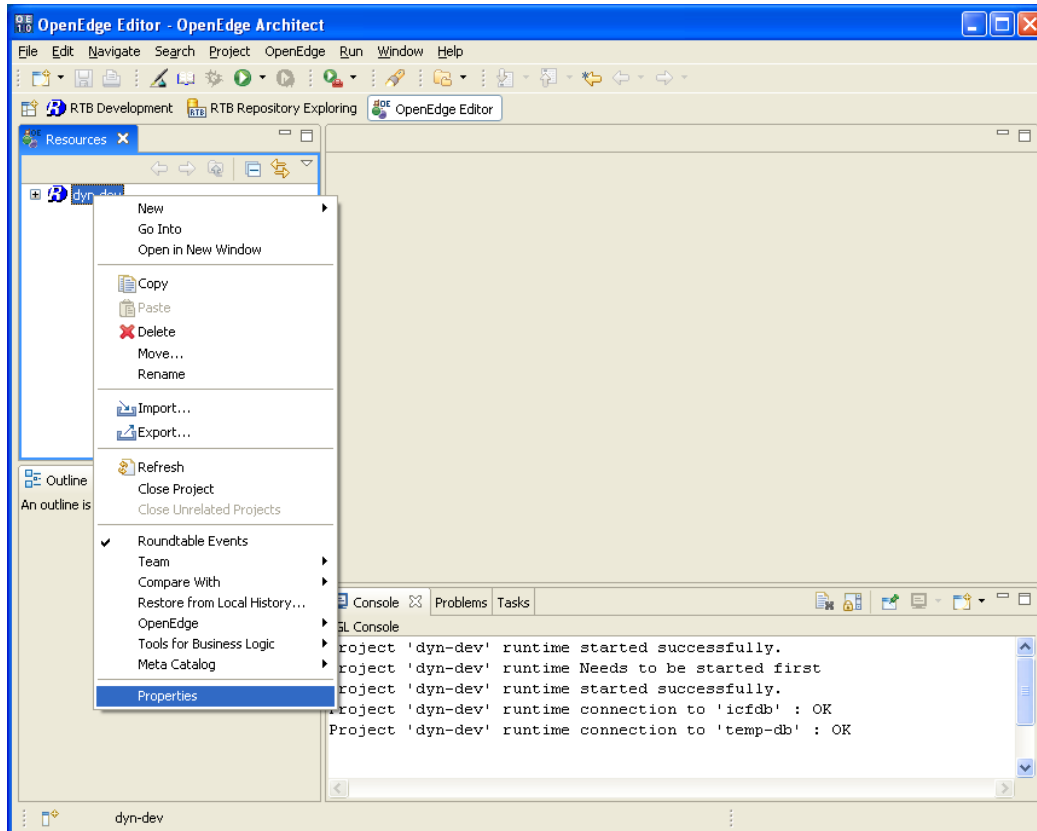


A Basic Roundtable OpenEdge project has now been created. This now has to be set up to be an OpenEdge Dynamics project.

3.3.3 Enabling Progress Dynamics

There are a number of project properties that have to be set for a Roundtable and OpenEdge project to be enabled for Dynamics. They are listed in this section.

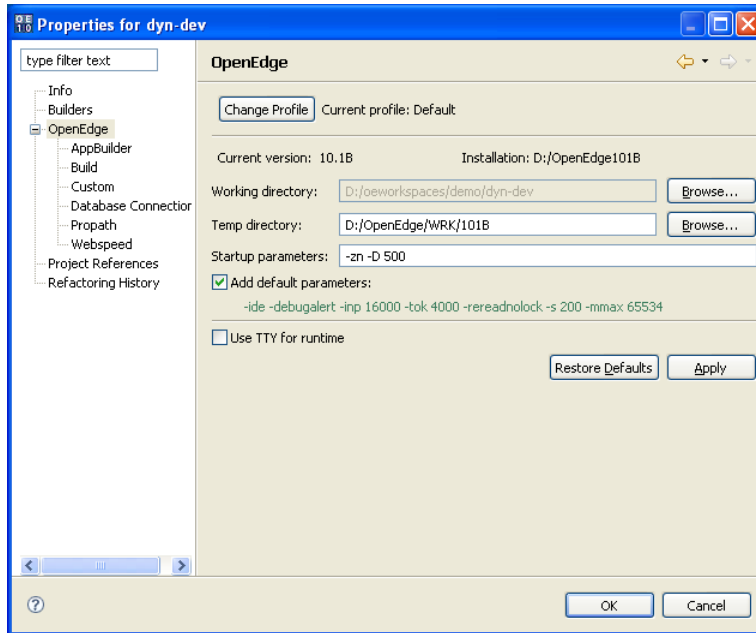
1. Select the project **Properties**.



2. In order for all of the code included in the Roundtable Dynamics deployment package to compile, the following startup parameters should be added

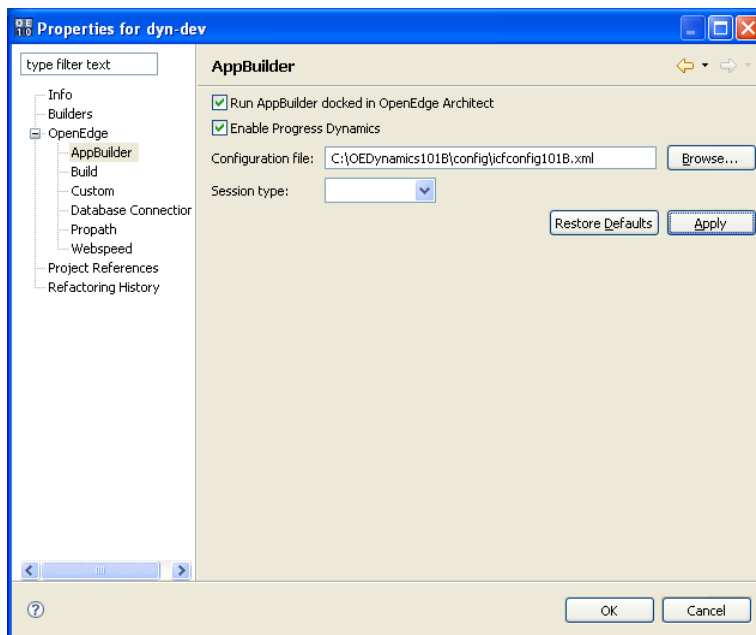
- -zn
- -D 500

NOTE: These parameters can also be set as default settings for OpenEdge Architect under the general OpenEdge preferences.

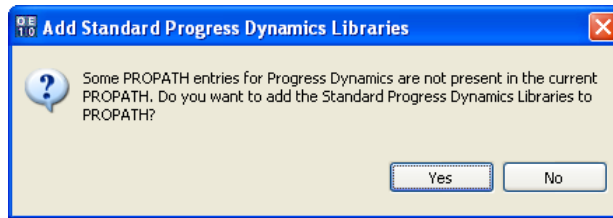


3. Next select the **OpenEdge → AppBuilder** folder.

4. Click **Enable Progress Dynamics**.

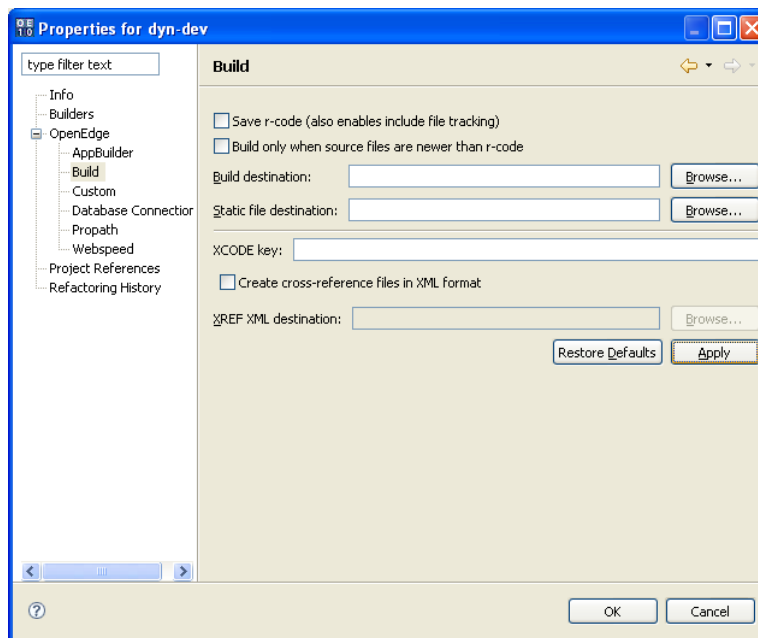


5. Answer **Yes** to the following questions about adding Dynamics libraries to the PROPATH.

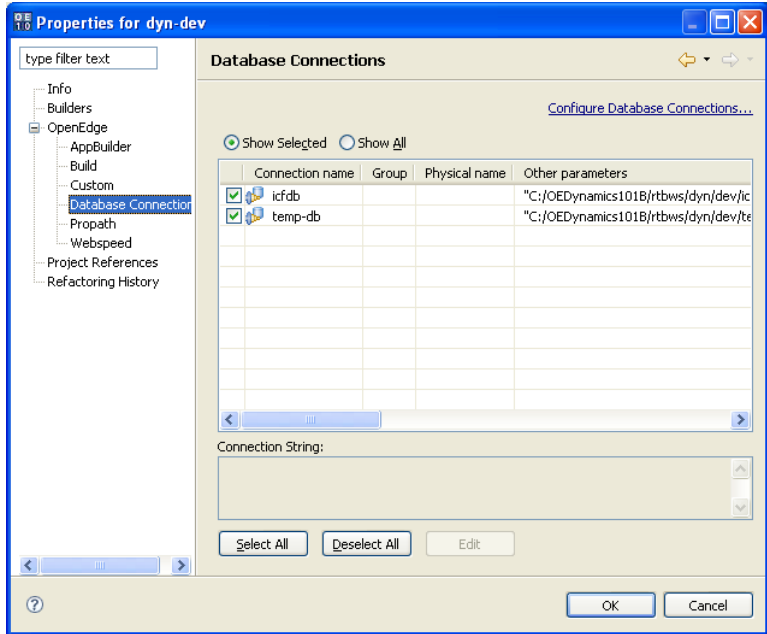


6. Do NOT set a Session Type in the combo box. The Roundtable Dynamics integration will automatically set the Session Type based on the project name when a project is started and the Roundtable repository is logged into.
7. Select the **Build** page. As there can be some conflicts with the generation of r-code from OpenEdge Architect and the Roundtable plug-in (mainly with the location of r-code), it is recommended to turn off the OpenEdge Architect build options for Roundtable Dynamics enabled projects.

NOTE: This may change in the future, if the Roundtable plug-in gets integrated with the OpenEdge Architect build processing.



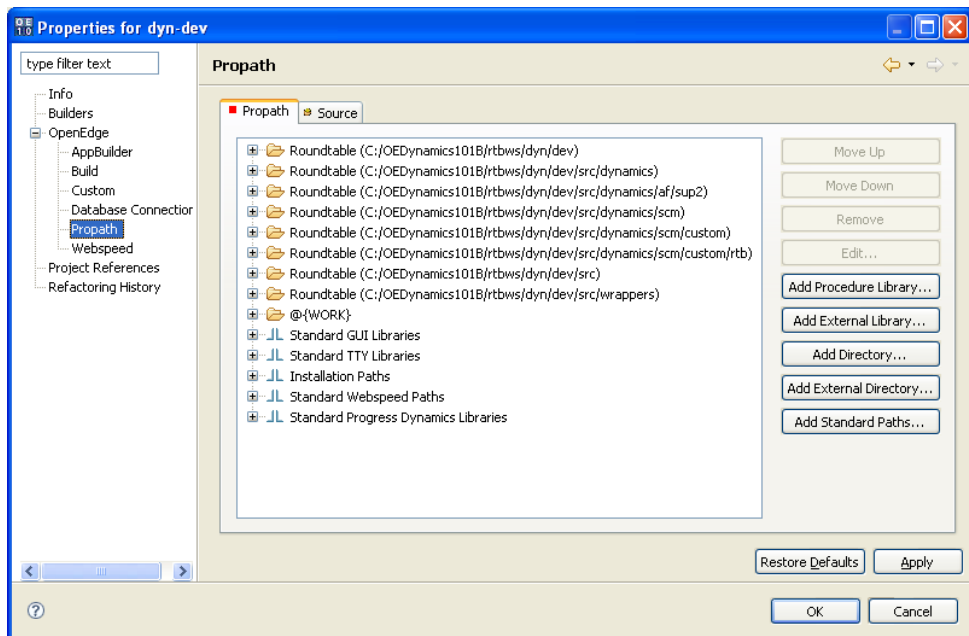
8. Next step is to make sure that the database connections from the Roundtable configuration have been correctly added to the project. Select the **Database Connections** folder and verify the database connection settings.



NOTE: If database connections are not visible here, it can either be because the database connections are not set up correctly in the Roundtable repository, or because the project has not been started properly in OpenEdge Architect after the project was created.

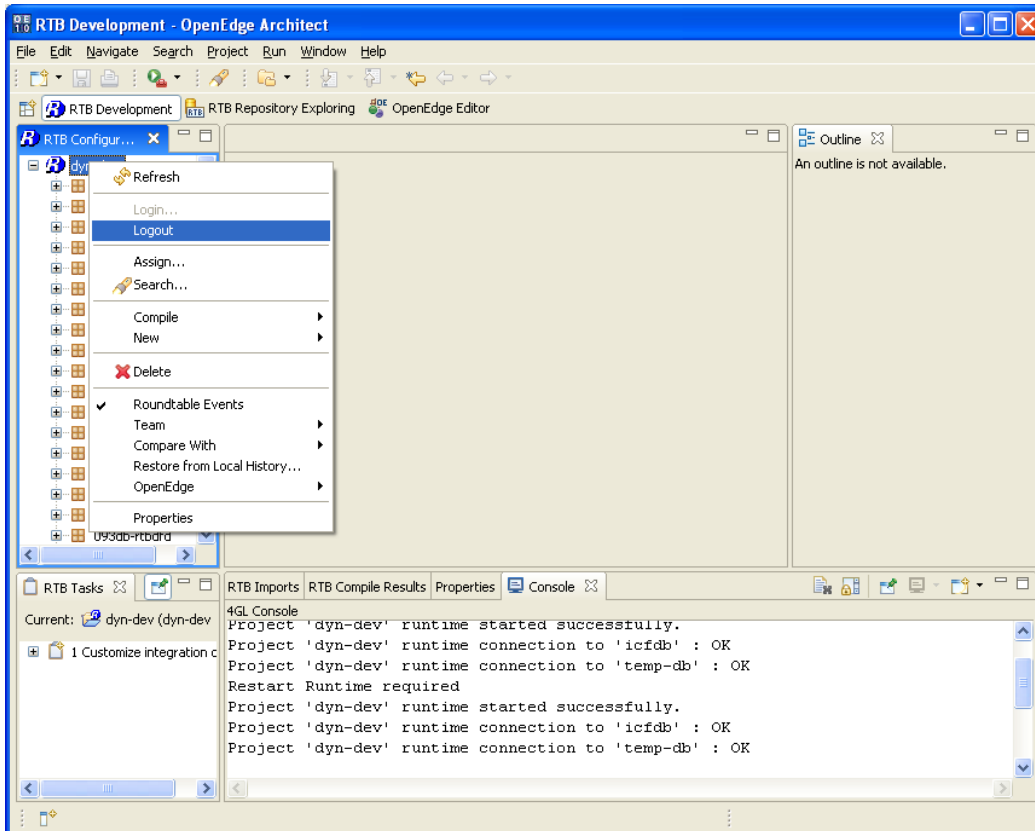
If the database connections are set correctly in Roundtable and they are missing here, try to restart OpenEdge Architect and log into Roundtable.

- Now validate the project **PROPATH**. This will have been inherited from the setting of the configuration within Roundtable.

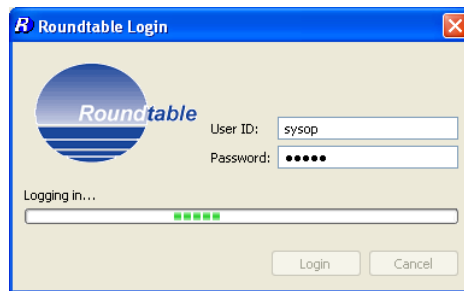


The project is now set up for Roundtable and Dynamics. It is now time to test these settings by restarting the project and checking that the Dynamics environment gets started when the project is started and a user logs into Roundtable.

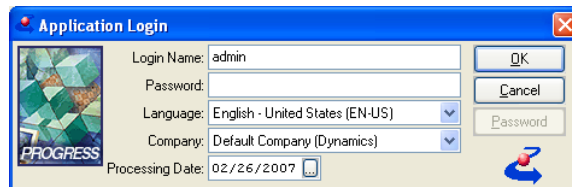
10. Return to a perspective with a **Roundtable Configurations** view. Right click on the configuration and select **Log out**.



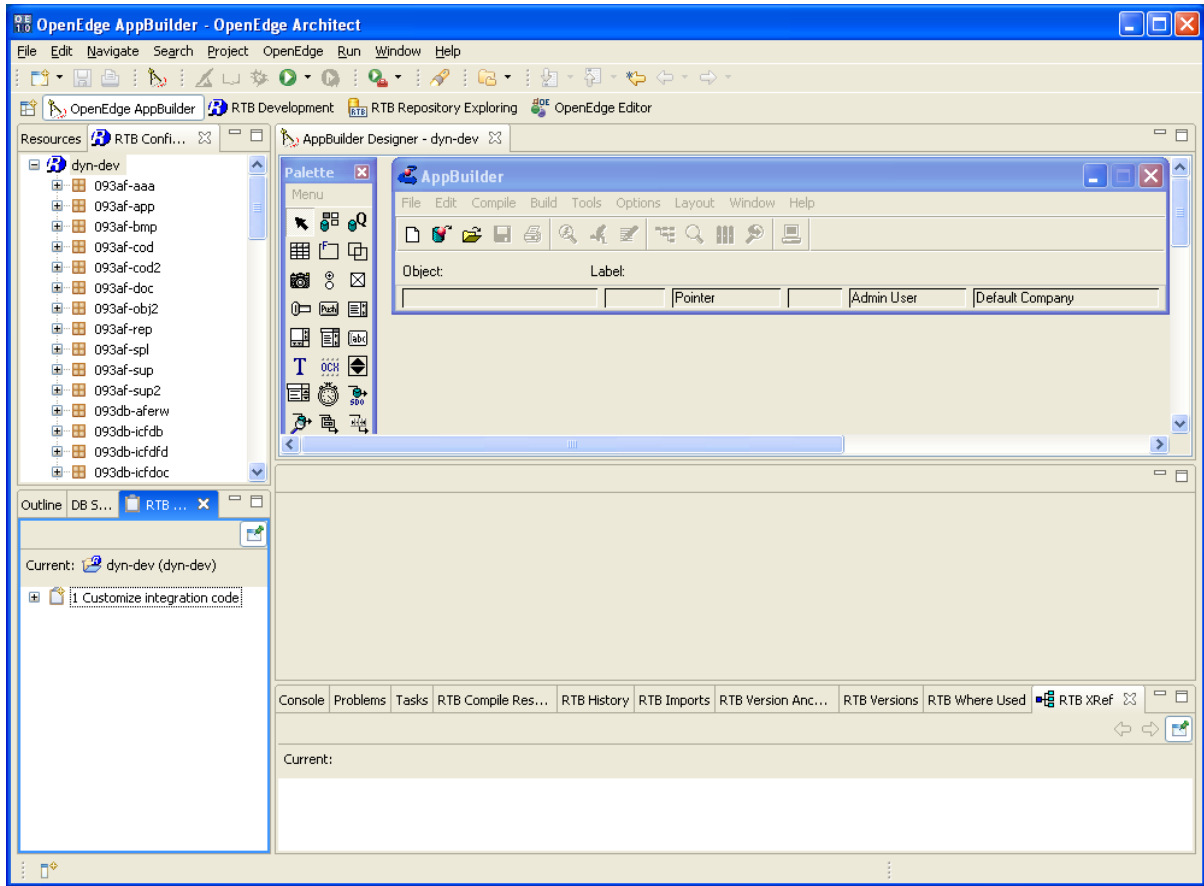
11. Select login again and log in to the Roundtable repository.



12. A RTB event will be triggered on successful login and after a few seconds a login to the Dynamics framework should appear.



13. Selecting an OpenEdge AppBuilder perspective and starting the AppBuilder should show a Dynamics enabled AppBuilder.



4 Related Documentation

Here are some related documents for setup and installation of the SCM Tool Roundtable for integration with Progress Dynamics, as well as some information resources for Roundtable and Progress Dynamics.

Document	Location/Filename
Roundtable TSMS Web site	http://www.roundtable-tsms.com/