



Installing Roundtable TSMS 10.2B and Progress Dynamics Integration

This document briefly describes the process of upgrading Roundtable 10.2B to work with the new Dynamics and Roundtable Integration which has been revised and updated by Tugboat Software.

The integration between Roundtable and Dynamics is based on Roundtable 10.2B and OpenEdge 10.2B and replaces any existing integration code previously used.

Copyright © 2010 by Ledbetter & Harp LLC

Roundtable® software products are licensed by Tugboat Software Inc. and copyrighted by Ledbetter & Harp LLC, with all rights reserved. This product update bulletin is also copyrighted and all rights are reserved. This document may not, in whole or in part, be copied, photocopied, translated, or reduced to any electronic medium or machine-readable form without prior consent, in writing, from Tugboat Software or Ledbetter & Harp LLC.

The information in this document is subject to change without notice, and neither Tugboat Software, nor Ledbetter & Harp LLC assume responsibility for any errors that may appear in this document.

April 2010

Roundtable® is a registered trademark of Ledbetter & Harp LLC.

Microsoft Windows is copyrighted by Microsoft Corporation. Microsoft is a registered trademark of Microsoft Corporation. Windows is a trademark of Microsoft Corporation.

PROGRESS is a registered trademark of Progress Software Corporation.

UNIX is a registered trademark of The Open Group in the United States and other countries.

All company and product names are the trademarks or registered trademarks of their respective companies.

Tugboat Software
3300 Irvine Boulevard
Suite 288
Newport Beach, CA 92660-3112

Roundtable 10.2B

If Roundtable 10.2B has not yet been installed then any existing repositories previously using 9.1C or earlier must be upgraded to 10.2B. Details for this are not included in this document.

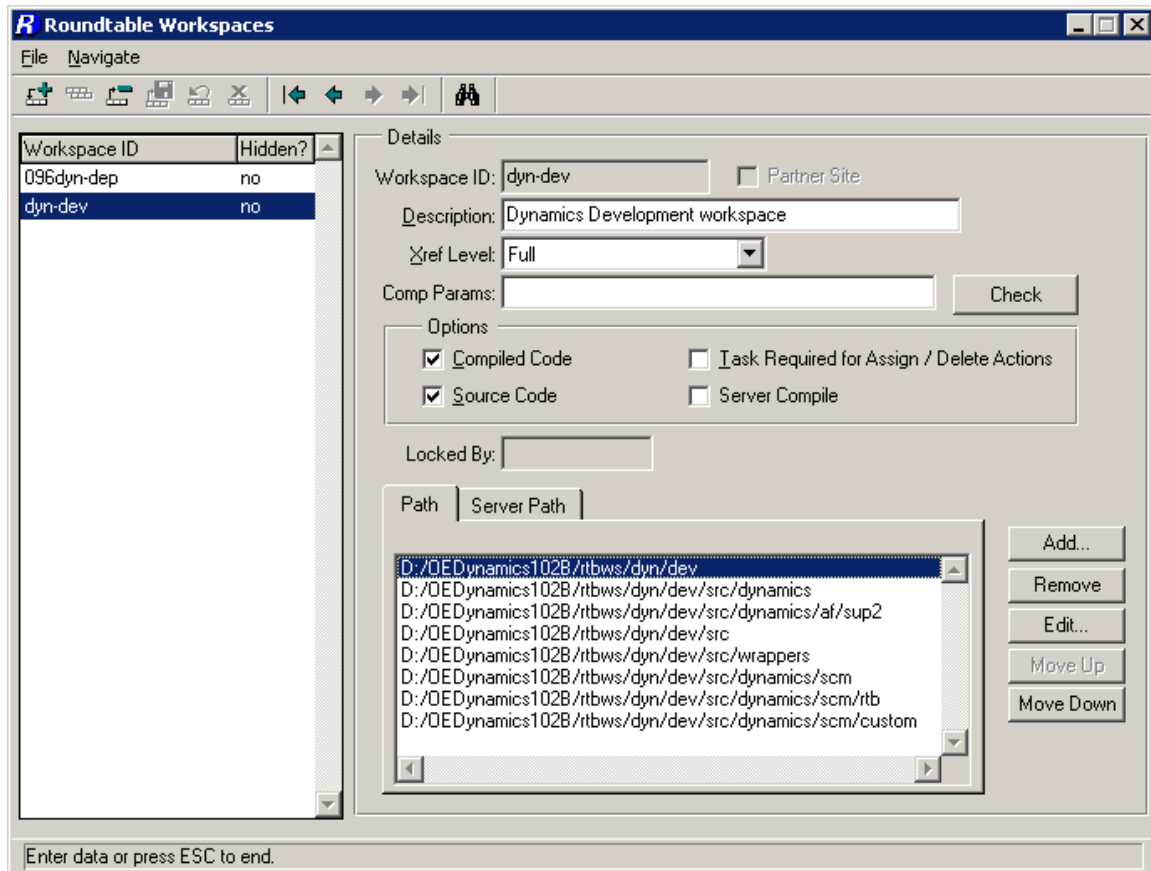
Installing the Roundtable and Dynamics Add-On

Once the install has been complete, the Roundtable installation is ready to be updated with the Dynamics and Roundtable integration.

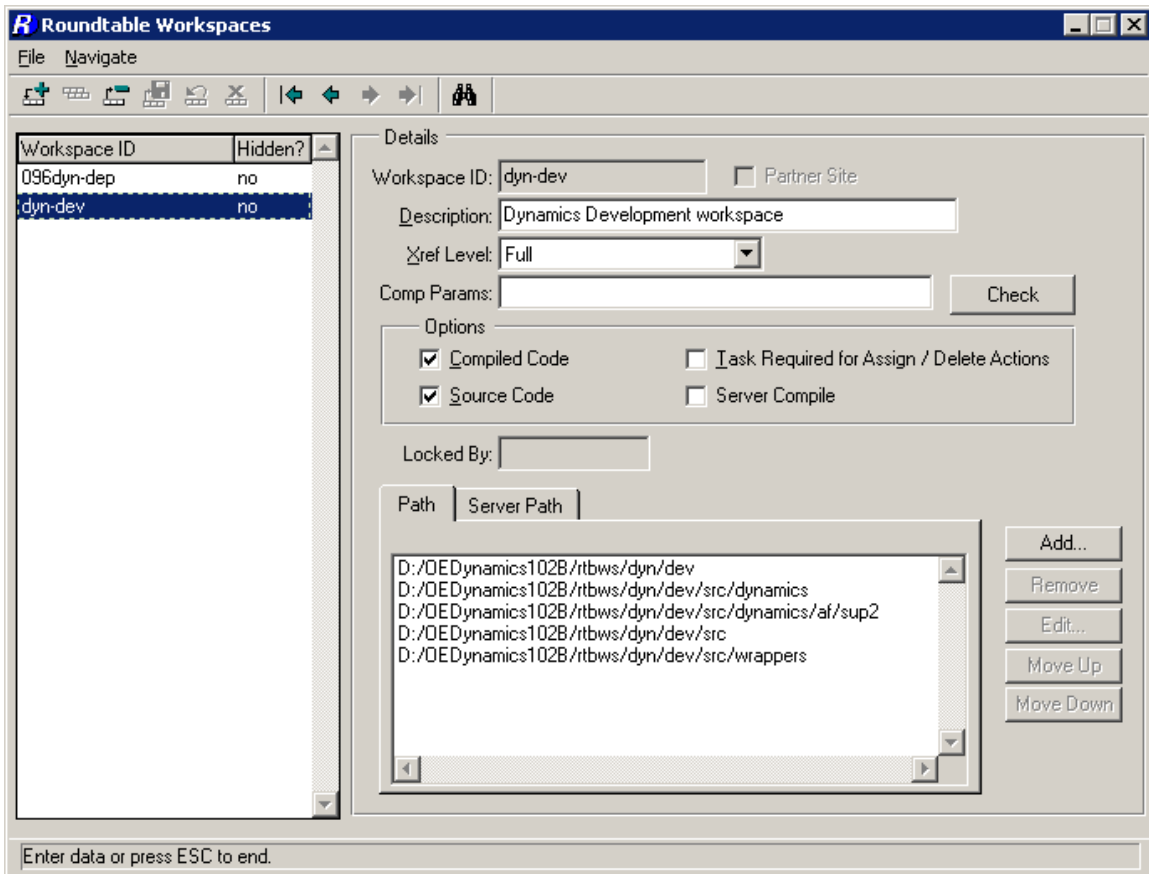
The integration code is provided as an add-on to the Roundtable client and not as part of the Progress Dynamics framework. This means that a standard version of the integration code can be used for multiple workspaces with a simpler workspace setup than for earlier versions. If there is a need to maintain customizations to the integration, this is possible by maintaining custom variants of the integration code as part of the application workspaces.

Changes to existing workspaces using Dynamics and Roundtable

If customizations of the integration code need to be maintained, workspace paths should be as shown in the screen shot below

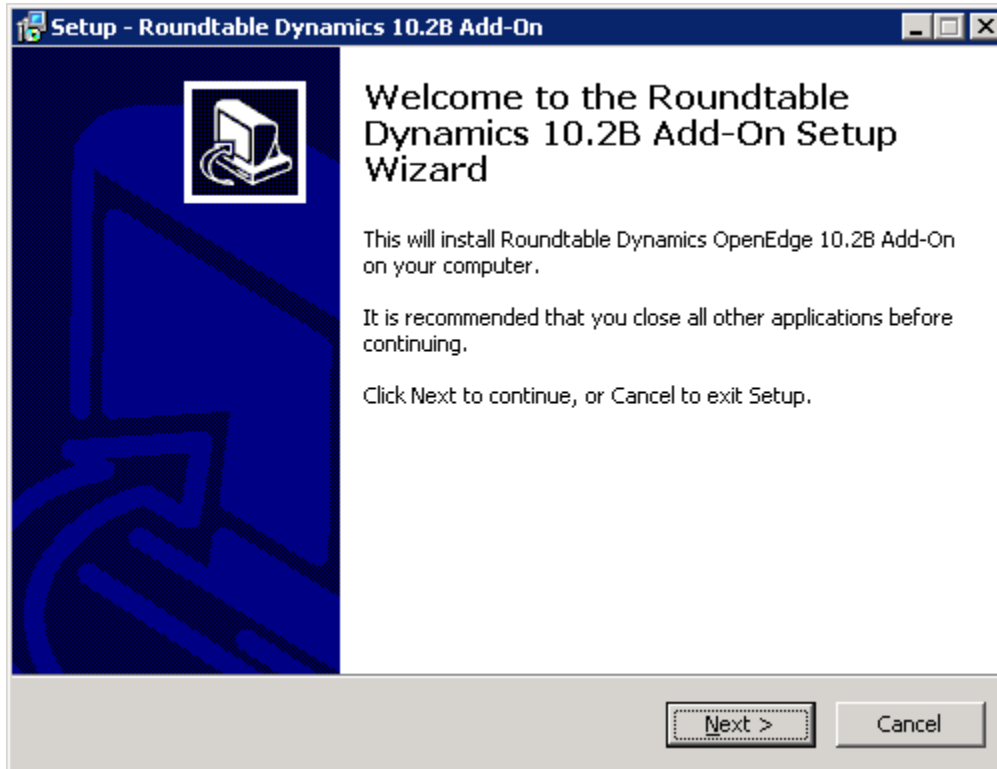


For setups where the standard integration is to be used, without customizations, the workspace paths should be as shown below.

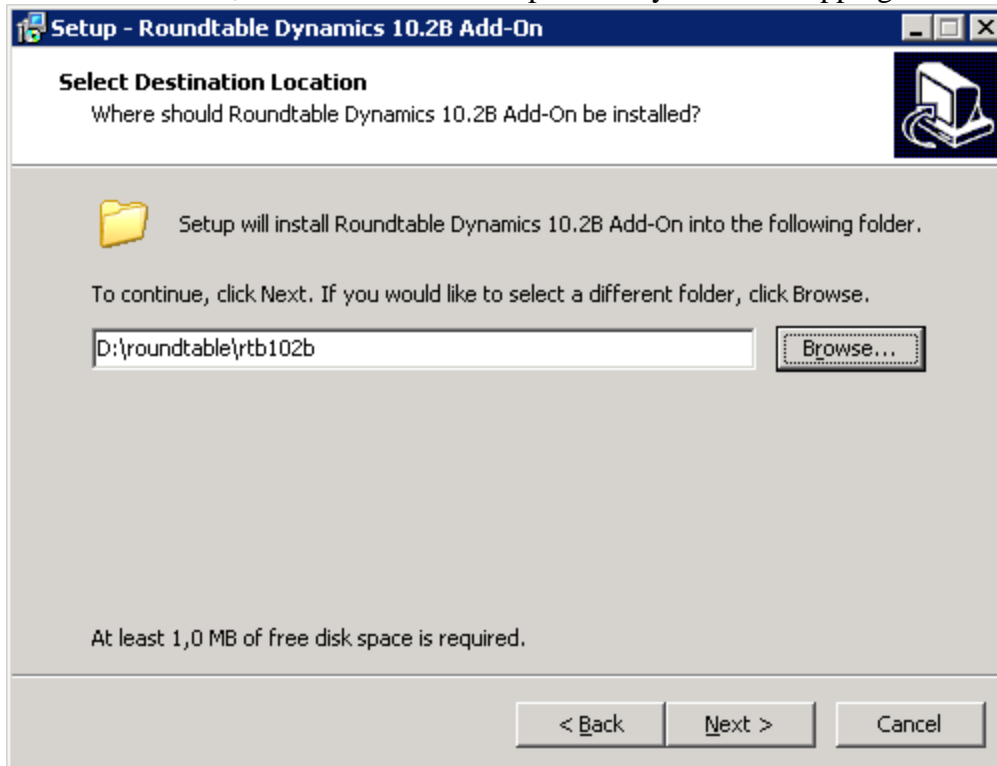


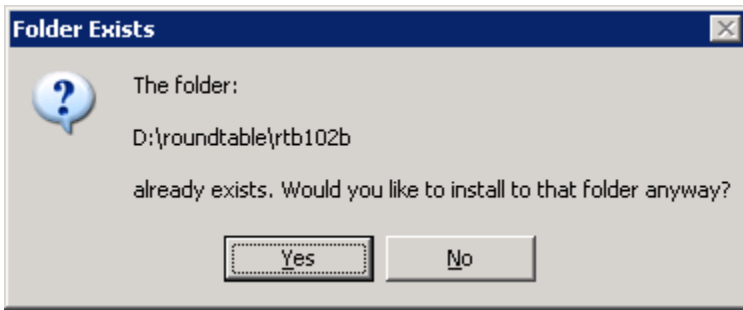
Do this for all workspaces which are to use a standard version of the Dynamics and Roundtable integration.

Installing the add-on



If the default directory for the installation package is not correct for the root of the Roundtable client, select the correct unzip directory before unzipping.

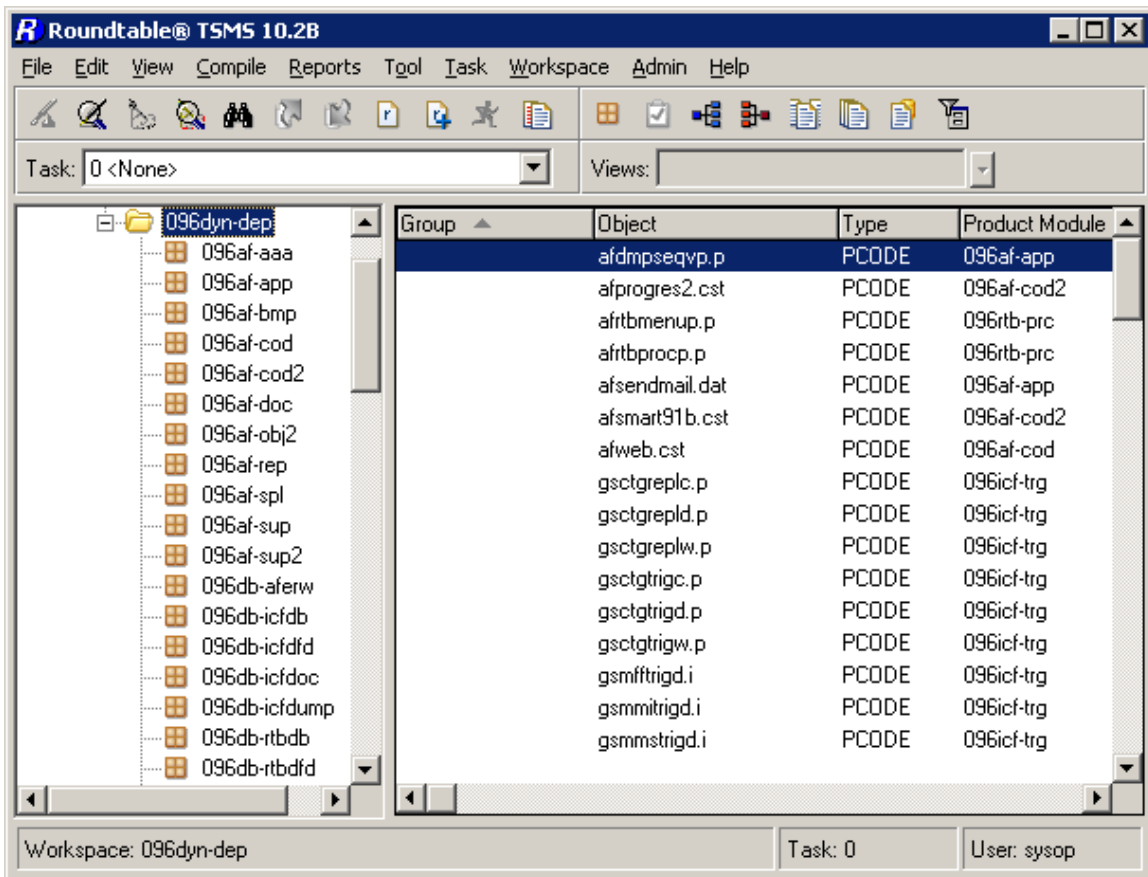




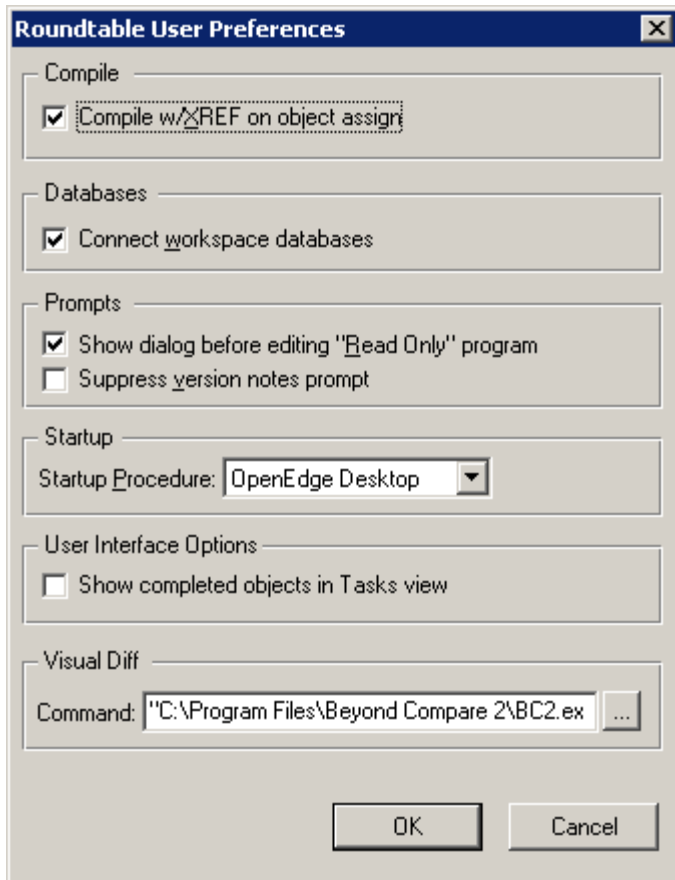
The extracted files are all contained in a subdirectory named “scm” in the root of the Roundtable client directory.

The new integration code is not provided as a Roundtable deployment. Instead the code will have to be compiled from a Roundtable session with a workspace selected that is connected to a Dynamics ICFDB database.

Start the updated RTB client and select a valid workspace with an ICFDB database connected.



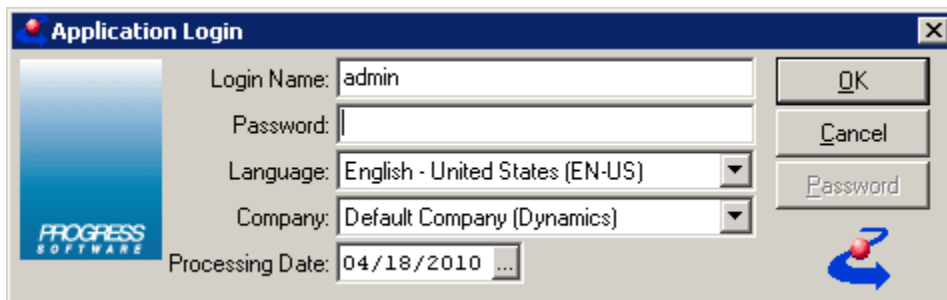
Remember to have the user preferences set to connect to the workspace databases.



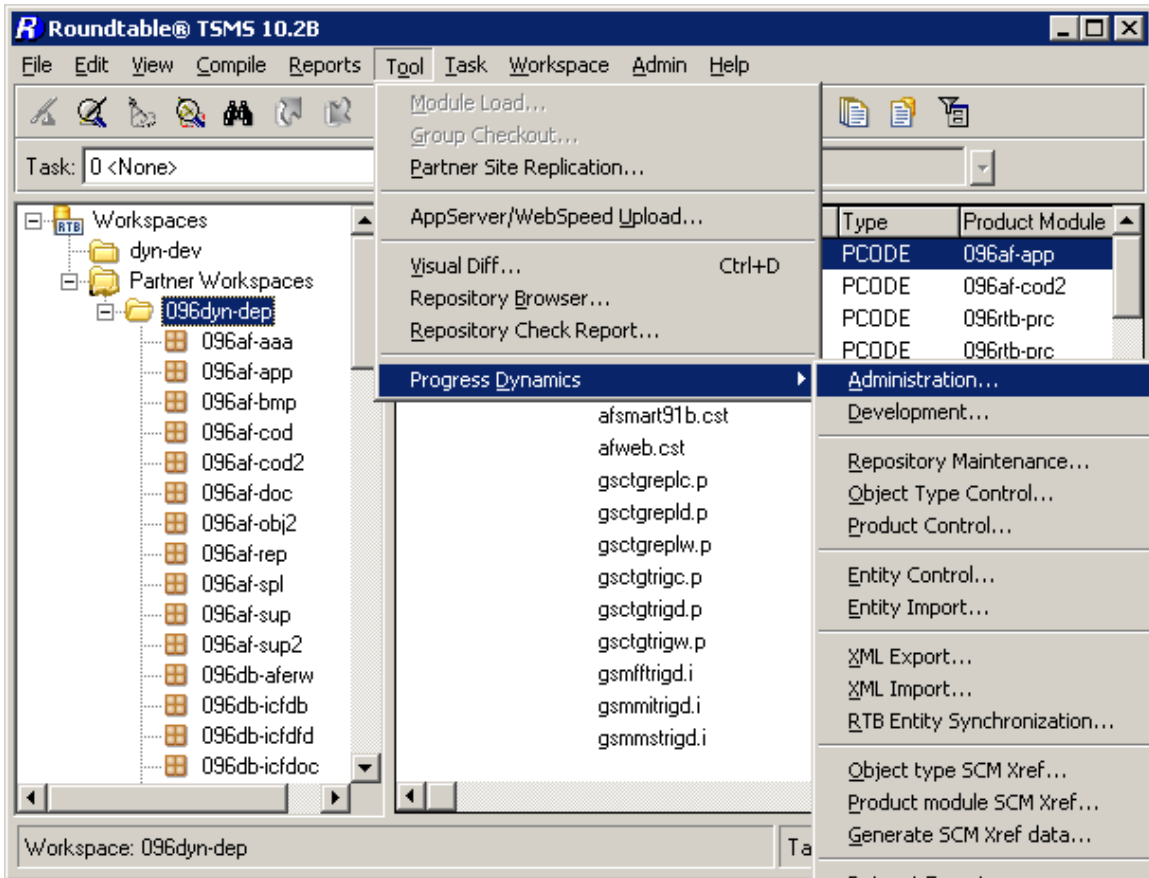
Start a Procedure Editor and run the following command.

```
RUN scm_compile.p.
```

This will compile the integration code located in the <roundtable install>\scm directory. Once this is done, re-selecting the workspace should give a log in to the Dynamics environment.



Check that the extra tool menu item for Dynamics is created as it should be.



This completes the installation of the new Roundtable and Dynamics integration.

Technical Support

If there are issues with the setup and install of the new Roundtable and Dynamics Integration, Roundtable Technical Support can be contacted at support-europe@roundtable-tsms.com.